

THE VISION FOR POPULATION HEALTH ENABLED BY TECHNOLOGY ENABLED CARE

Nicky Parker, Director of Business Change &
Transformation, Manchester City Council
Helena Zaum, Industry Director, Local &
Regional Gov, Microsoft UK

“THIS IS
MANCHESTER
WE DO THINGS DIFFERENTLY HERE”.

ANTHONY H. **WILSON**





Life on the line? Differences in life expectancy across Greater Manchester



● Female life expectancy at birth (years) ● Male life expectancy at birth (years) ● IMD Decile (1 most deprived; 10 least deprived)



Tram Network: The Metrolink tram network across Greater Manchester includes nearly 100 kilometres of track and 93 stops. In 2015 there were around 33.4 million journeys (Metrolink 2015). The average journey time between tram stops is 2 minutes, but some stops are further apart.

Data Sources: Office for National Statistics experimental ward level life expectancy and health living life expectancy estimates (ONS 2006) linked to selected Greater Manchester Metrolink tram stops. The selection highlights some of the biggest differences between tram stops. We also include information on socio-economic deprivation at ward level from the Index of Multiple Deprivation.

The life expectancy data is based on mortality among those living in each particular ward in 1999-2003. The estimates are not the exact number of years a baby born in the ward could actually expect to live, both because the death rates of the area are likely to change in the future, as is health care provision and because many of those people born in the ward will live elsewhere for at least some part of their lives.



What makes your area different to other areas? Let us know. Email: life.expectancy@manchester.ac.uk

GREATER MANCHESTER HEALTH AND SOCIAL CARE DEVOLUTION

Memorandum of Understanding



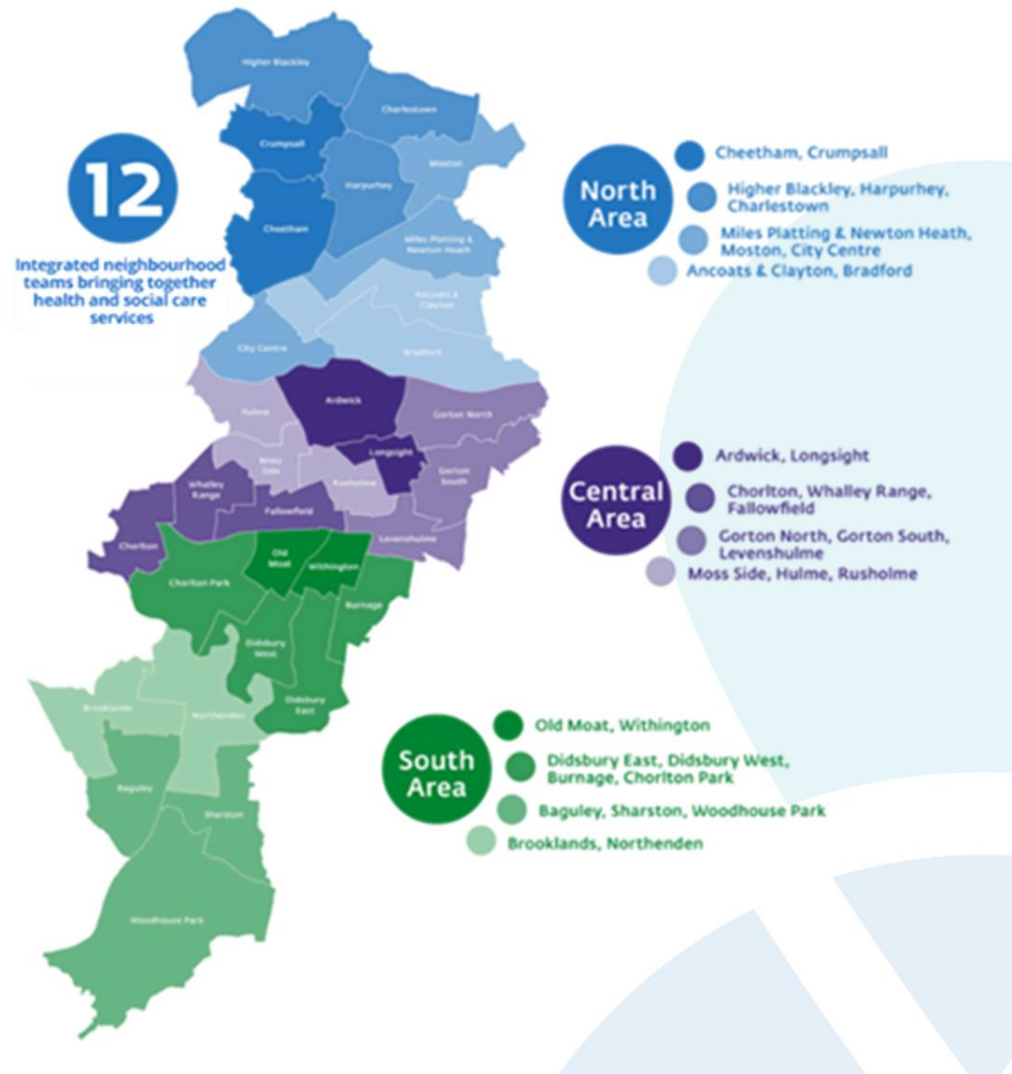
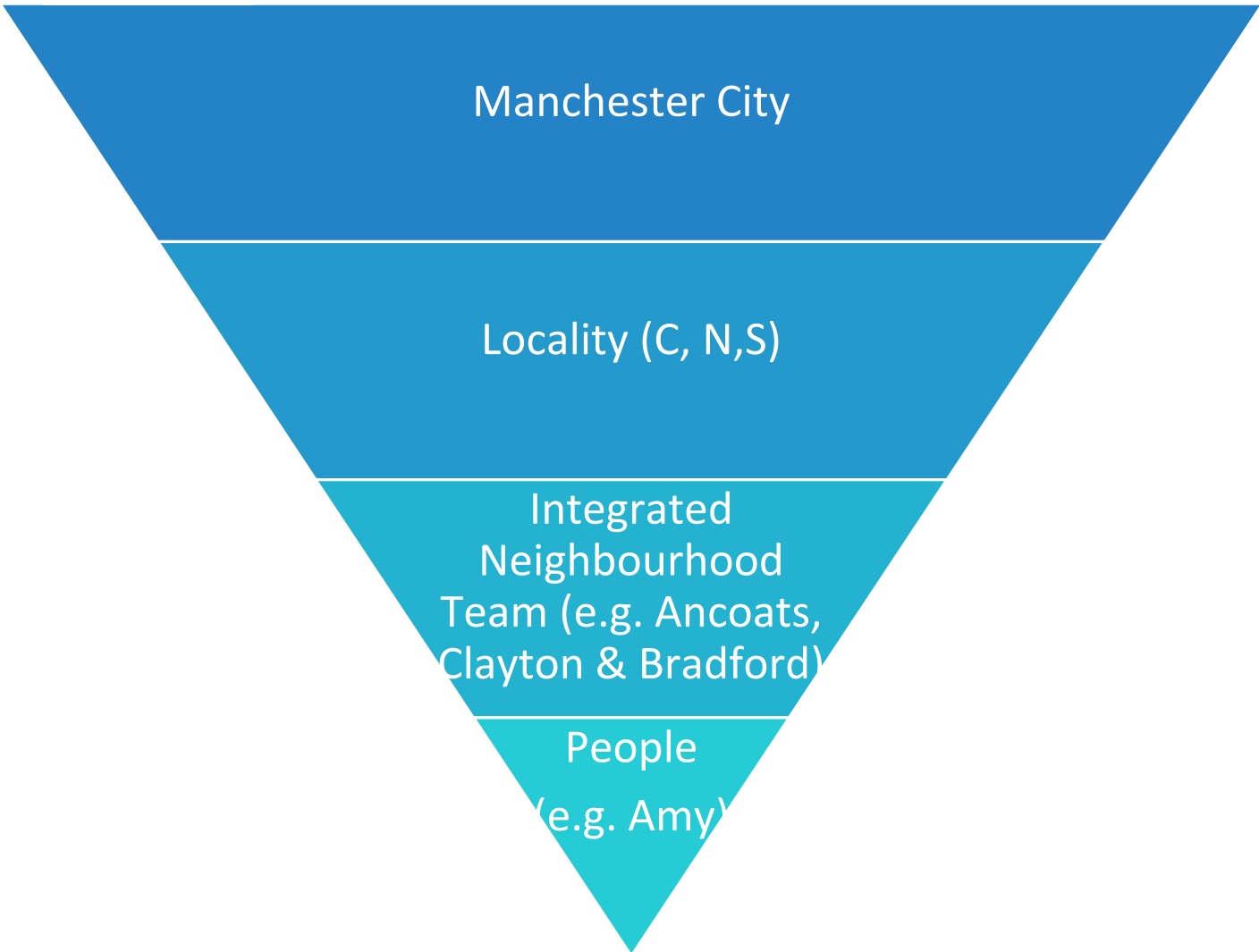
Manchester Local Care Organisation

Leading local care, improving
lives in Manchester, with you

34 The NHS Long Term Plan

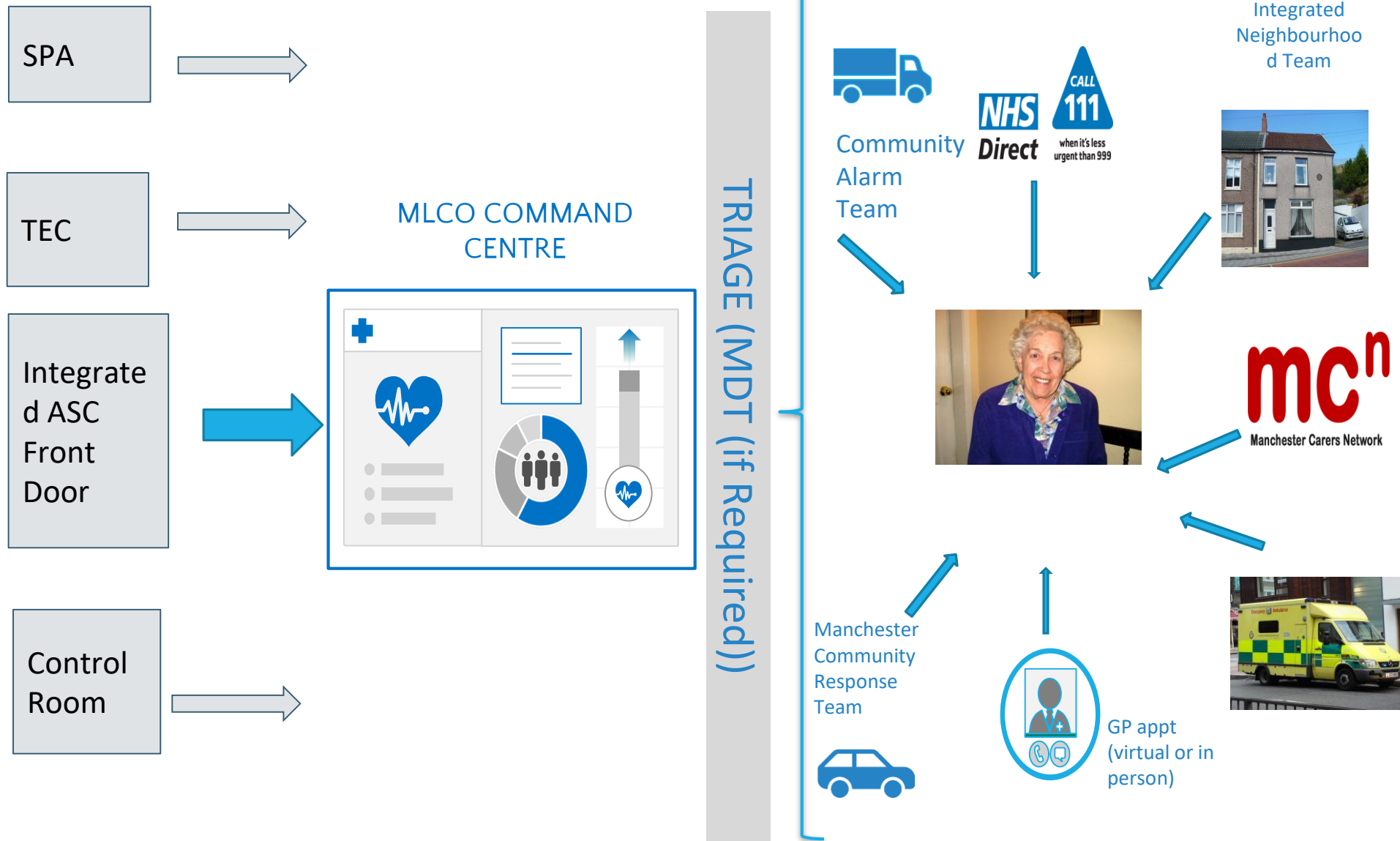
2.6. As described in Chapter One, our new integrated care systems (ICSs) will help deliver these programmes as the NHS continues to move from reactive care towards a model embodying active population health management. ICSs – including the devolved health and care systems in Greater Manchester and Surrey Heartlands – will also provide stronger foundations for working with local government and voluntary sector partners on the broader agenda of prevention and health inequalities. They will in turn be supported by expanded teams across groups of neighbouring GP practices who work together under the primary care network contract and with local NHS, social care and voluntary services, funded by the new Long Term Plan investment guarantee for primary and community services.

How our multi disciplinary teams are organised



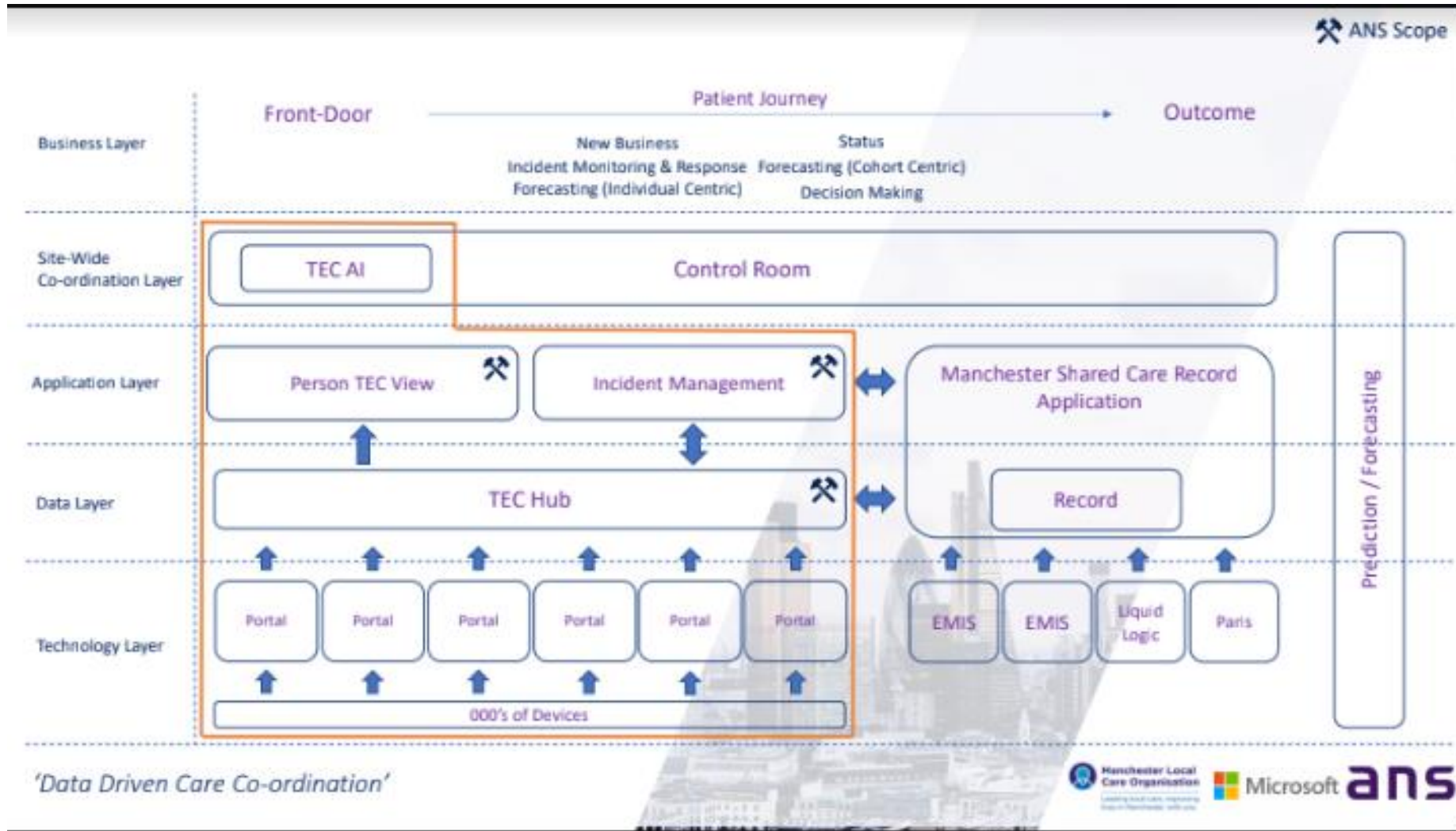


Building our eco-system



Phase 1 is within red box and is underway. Concept design and soft market test complete and at procurement stage in MCC

Phase 2 would link to Manchester Shared Care Record within a Control Room





This Photo by Unknown Author is licensed under [CC BY-NC-ND](https://creativecommons.org/licenses/by-nc-nd/4.0/)

Investment

Business case

Return on investment

Funding from:

- Greater Manchester Transformation Fund

- Manchester City Council Capital Programme

- Manchester City Council ASC revenue budget

- European Space Agency

Additional social value and carbon reduction



This Photo by Unknown Author is licensed under [CC BY-SA-NC](#)

INDIVIDUALS & POPULATIONS