

The logo for DELTA CONNECT features a stylized knot-like symbol on the left, composed of three interlocking loops in yellow, red, and blue. To the right of this symbol, the word "DELTA" is written in a large, dark blue, sans-serif font. Below "DELTA", the word "CONNECT" is written in a smaller, dark blue, sans-serif font. The letter "N" in "CONNECT" is partially overlaid by a small yellow loop from the knot symbol. The letter "A" in "DELTA" is stylized with a yellow triangle on top and a red triangle on the right side, with a blue triangle on the left side.

Delivering a healthier West Wales



Partners



Cefnogi Trydydd
Sector **Cymru**
Third Sector
Support **Wales**





Social Services and Well-being (Wales) Act 2014

The Essentials



Well-being



People



Partnership & Integration



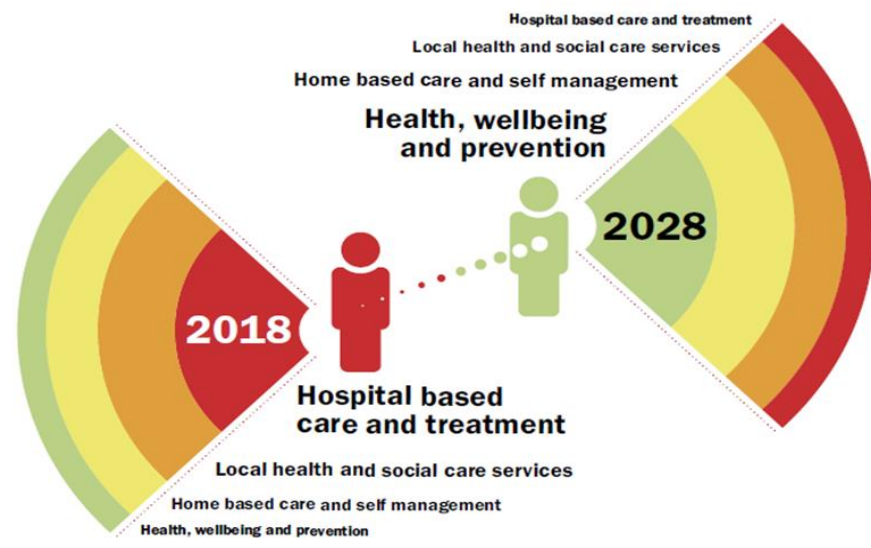
Prevention



Well-being of Future Generations (Wales) Act 2015

The Essentials





Health and Social Care



West Wales Care Partnership

A Healthier West Wales

Transformation proposal by the West Wales Regional Partnership Board

November 2018



A Healthier West Wales Making Change Happen



A model of Proactive Technology Enabled Care delivering a seamless framework of prevention

- Largest single allocation nationally £7.5 million
- National exemplar programme

A screenshot of a Welsh Government press release page. The header includes the Welsh Government logo and the word 'Cymraeg' next to a search bar. The main heading is '£12m programme to transform delivery of health, care and support in West Wales'. Below this is a blue box with a summary: 'Health Secretary, Vaughan Gething has announced £12m for an ambitious programme to modernise and improve health and social care in West Wales.' To the right of this box are the dates 'First published: 19 March 2019' and 'Last updated: 19 March 2019'. Below the blue box is a paragraph of text: 'The money will support a range of initiatives that shift services from hospital to people's homes and communities making it easier for people to access the care they need, stay well and keep their independence.' To the right of this paragraph is a 'Share this page:' button with icons for Twitter, Facebook, and a general share icon. Below this is another paragraph: 'Led by the Regional Partnership Board, the West Wales programme is the latest to receive funding from the Welsh Government's £100m Transformation Fund. The Fund has been created to support key actions from the Welsh Government's long term plan for health and social care, A Healthier Wales.' At the bottom is a section titled 'The programme includes:' followed by a bulleted list: '• New use of technology to enable monitoring of individuals with health conditions, or at risk of developing them, within their homes. Helping people look after themselves, reducing isolation and providing rapid wrap-around support within communities on a 24/7 basis' and '• Bringing services together, speeding up plans to offer health, social care and other support from one place closer to home'.

Telecare: The UK should learn from Barcelona's example



Support The Guardian
Available for everyone, funded by readers
Contribute → Subscribe →

Search jobs Dating Sign in Search UK edition

The Guardian

News Opinion Sport Culture Lifestyle More

social care network: adult social care

Telecare: The UK should learn from Barcelona's example

Paul Burstow

Mon 16 Mar 2015 10.03 GMT

The city has continued providing proactive telecare, despite austerity and cuts from central government



▲ Telecare services in Barcelona target people before they become frail and dependent. Photograph: Alamy

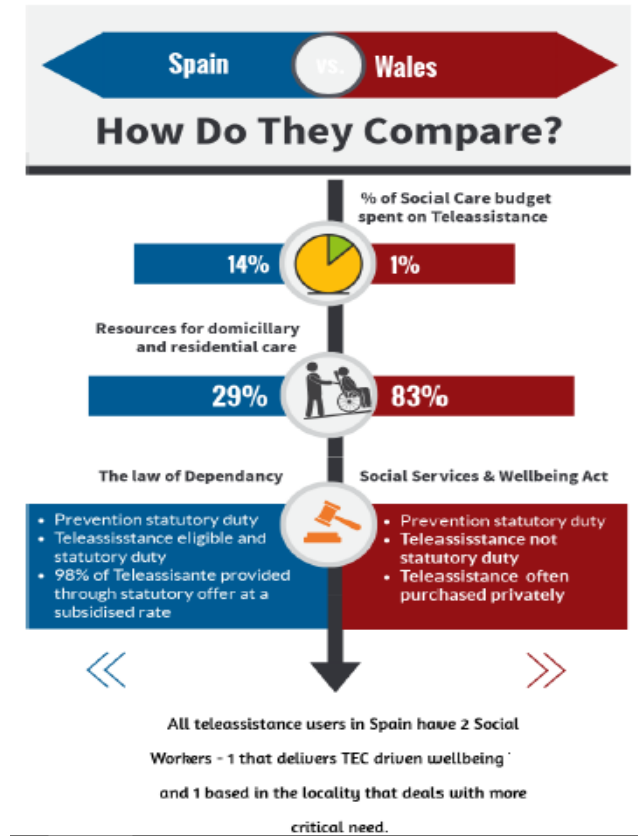
Telecare and telehealth in the UK are stuck in the mud. Despite positive evidence from the Department of Health's demonstrator project, funding and professional silos have choked off progress.

Even the NHS [Five Year Forward View](#) has little to say about the potential for

Advertisement



Developing a Business Case



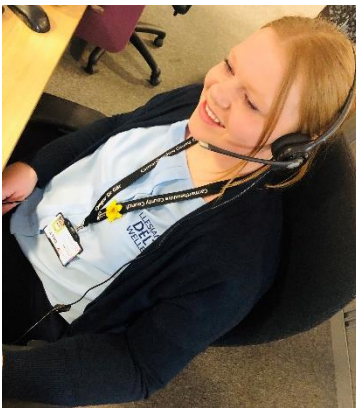
Business Case
 A Technology Enabled Care (TEC) approach to prevention in West Wales
 June 2018



Pro-active Technology Enabled Care

Our model

- Based on the Spanish model in Bilbao
- Delivered regionally with local implementation



The cohort



Assessment process

Assessment

Individualised Stay Well Plan

Proactive wellbeing calls

Bespoke TEC

Appropriate response 24/7

Pathways of support



Evaluation



It's all connected!







- The Foundation Programme
- Other funding streams support and compliment
- Integrated 24/7 with crisis response / virtual ward model
- Digital buddying project



Thank you for
listening

Carla Dix
TEC Prevention Strategy Manager

 Carla.Dix@Deltawellbeing.org.uk  0300 333 2222  deltawellbeing.org.uk  @DeltaWellbeing

