

**Harnessing
developments in
technology to benefit
people affected by
dementia**

**Jeremy Hughes
CBE
Chief Executive**



Dementia statements

We have the right to continue with day-to-day and family life, without discrimination or unfair cost, to be accepted and included in our communities and not live in isolation or loneliness

Draft Dementia Technology proposals

Objective: To lead the world by ensuring people affected by dementia are empowered to live 'well' for longer using technology-enabled solutions to support self care

Objective: We create an environment which allows high-quality and impactful dementia technology research and innovation to take place

Objective: All health and social care professionals are trained and educated to enable the use of technology-enabled care



How Do I?

Who are How Do I?

A technology company working to make a difference to the lives of people with dementia and their loved ones. They want to help people with a diagnosis live more independently at home for longer.

What is Refresh?

A mobile video support tool for people affected by dementia and their families. It includes a pair of mobile apps that can link helpful personalised videos to objects in your home. These videos can help with remembering how to complete a task, or capture memories of activities you've taken part in and don't want to forget.

'A picture says a thousand words. How many does a video say?'



W: wearehowdoi.com/refresh
E: hello@wearehowdoi.com
S: @WeAreHowDoI

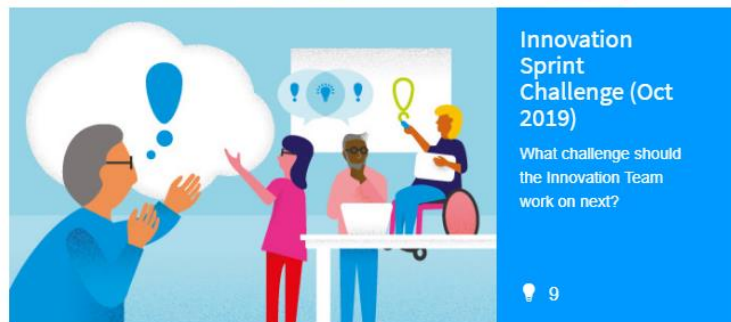
Innovation Hub



Welcome to the Alzheimer's Society Innovation hub!

This is your site - you can suggest projects, comment and question ideas and vote to decide which projects the Alzheimer's Society Innovation Team should work on and the solutions we develop, to enable people to live well with dementia. We'll also be sharing regular updates on ongoing projects. Get involved in our challenges and make a difference!

Our latest call for challenges is now open! Please suggest challenges and vote for your favourite to determine which Sprint Project the Innovation Team works on next.



Innovation Sprint Challenge (Oct 2019)

What challenge should the Innovation Team work on next?

9

[View challenges](#)

News



by Simon Lord
1 week ago

Welcome to the Alzheimer's Society Innovation Hub



Accelerator Programme – Now open for new applications
1 week ago

0



Accelerator Programme - Jelly Drops
1 week ago

1



Accelerator Programme



Alzheimer's Society Innovation Hub

We want to hear from people with experience of dementia to decide what challenges we should tackle next.

By listening to people affected by dementia, we'll tackle the challenges that matter most.

Innovationhub.alzheimers.org.uk



Getting around

For lots of people with dementia, particularly in rural areas, their car is the key to their independence. When their dementia progresses to the point where they can't drive anymore, it can limit their ability to engage with the world around them. They may no longer be able to do things like...

by Ciara Lihou
1 week ago

27 VOTES



In their shoes

For those without dementia it is difficult to understand the daily challenges and without this understanding, how can society truly become dementia friendly. Can we create something using VR technology, that allows people to...

by Katie Cartwright
1 week ago

20 VOTES



Staying dry - continence and dementia

I know that a lot of people with more advanced dementia struggle with continence. This is an issue that affects people's dignity, is a barrier to living well with dementia. It can present both problems for carers,

by Danielle Coombes
1 week ago

16 VOTES



Lead the way with dementia friendly environments

Most of our premises are not dementia friendly. Signage and layout is inappropriate for PABD, toilets have blank doors and unrecognisable taps and hand drying equipment.

by Anthony Fletcher-Goldspink
1 week ago

15 VOTES



survey of dementia training for nursing courses

Three years ago, I heard a former trustee talk about that challenges people affected by dementia face when they are admitted to hospital. One of the reasons cited for this...

by Christopher Manley
1 week ago

10 VOTES



Who moved my teeth?

My grandma had a fall in her care home and went to hospital with a fractured hip. She had surgery in one hospital and went to a recuperation ward in another. Somewhere in the NHS are a bottom row of teeth belonging to my grandma because...

by Gaby Morgan
1 week ago

10 VOTES

MyCarer – Alexa skill

Thank you

Jeremy Hughes
CBE
Chief Executive

