

The future is now:

The Role of Intelligent Remote Monitoring in Supporting older people to stay independent for longer

TSA Webinar July 2021

Paul Berney
CMO



Anthropos is a start up with an outstanding heritage and deep experience.

Software development, IT operations, IoT platforms, AI and systems integration.

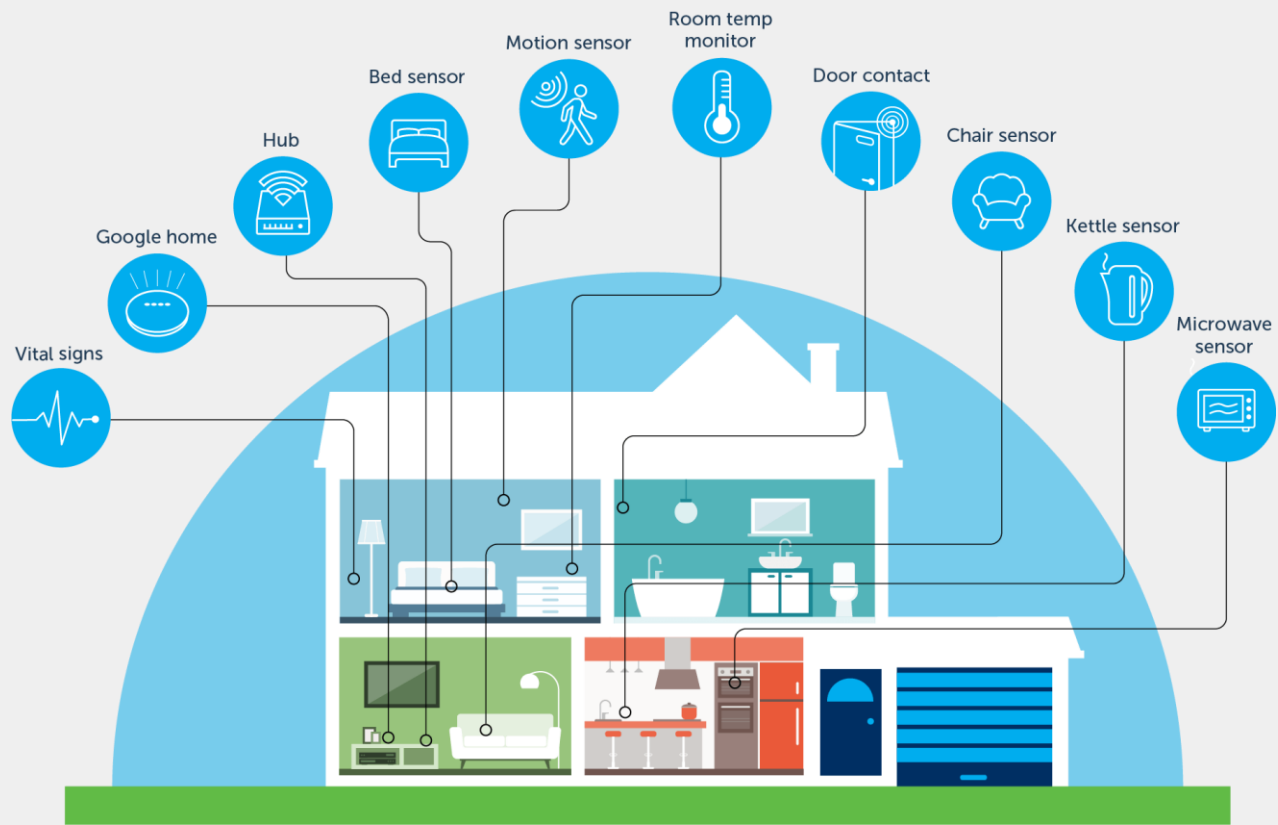


Intelligent Remote Monitoring

Support older people to stay safe and well in their own homes for longer.

Prevent the preventable.







Alerts.

Something is wrong
immediate action is required.

Sent via dashboard and email / SMS.

Sent to the care provider, family or
response centre



Actionable Insights.

Something is changing
(from the normal daily routine).

No immediate action is required,
but should be reviewed

Sent to the care provider dashboard
or family portal



Current Alerts & Actionable Insights.



First morning activity not detected



No movement in high risk area



Increased Activity at Night



Fridge opened less frequently



Kettle used less frequently



Microwave used less frequently



Too long in high risk area



Door left open



Wandering



Rooms too hot / cold



Too long in chair (nudge)



Increased / decreased bathroom visits



Anthropos provides intelligence in four different formats.



Alerts



**Actionable
insights**



**Dashboard
& reports**



**Client activity
graph**



Supporting people throughout their care journey

Primary Care



GP's

Prevention
Intervention
management

Secondary Care



Clinical Staff

Discharge/ToC
Remote Patient
Monitoring

Intermediate Care



**Occupational
Therapists**

Reablement

Social Care



**Local Authorities/
Care Providers**

Long Term Care
conditions



Early success



Warwickshire Pilot Stakeholders



Care company managing Extra Care Schemes and providing Domiciliary Care



GP Practice with 8,000 patients in Warwickshire



GP Practice with 13,000 patients in Leamington Spa



Local Authority with responsibility for social care



Clinical Commissioning Group



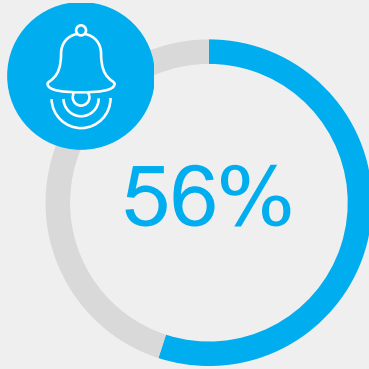
NHS Foundation Trust (SWFT)



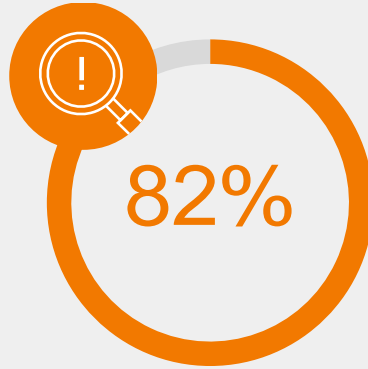
Trial Overview - supporting enhanced community care



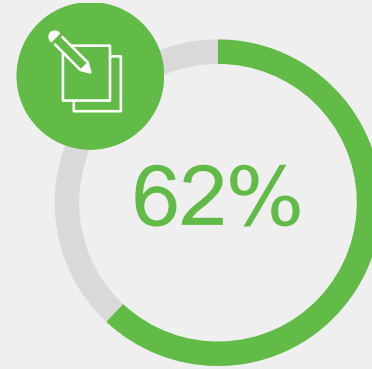
The Impact of Anthropos



of clients received an Alert requiring immediate action by the family and / or the care provider



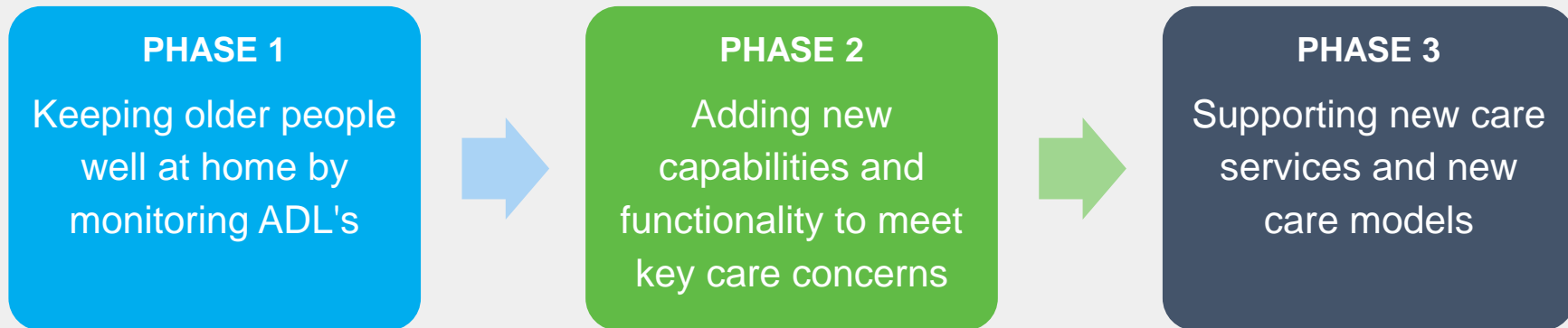
of clients received Actionable Insights which revealed a previously unknown / unseen change in behaviour



of clients have had changes to their care plans as a result of the Actionable Insights



The phased development of our Connected Care Platform:



Themes for current platform development

Monitoring key care concerns

e.g. falls,
wandering,
hydration,
medication
management

Management of long term conditions

e.g. frailty,
dementia

Extending processing capabilities

e.g. AI and ML,
Integration with
care management
software

Extending operational capabilities

e.g. scalability,
instrumentation,
additional data
sources



- **Are they OK?**
- **Do they need help right now?**
- **Is something changing that should be looked at?**





Better care experience
Better care outcomes
Better use of time & resources

To continue the conversation

Paul Berney

Chief Marketing Officer

www.anthropos.io

@anthropos_io

 paul.berney@anthropos.io

