



Tunstall

Driving digital inclusion
and data accessibility

Angus Honeysett,
Head of Market Access

Penny Ellis
Business Development Director

16th November 2021

TSA/ADASS Commission

Tunstall support the recommendations made in the commission, and through partnership working and collaboration are helping to drive digital inclusion and data accessibility as health and social care integrate.

Digital infrastructure, skills and approaches in social care must improve so individuals and the care workforce can maximise digital opportunities.

ENABLING WORKFORCES TO MAKE EFFICIENT AND EFFECTIVE USE OF TECHNOLOGY AND DATA to improve outcomes for people families and carers

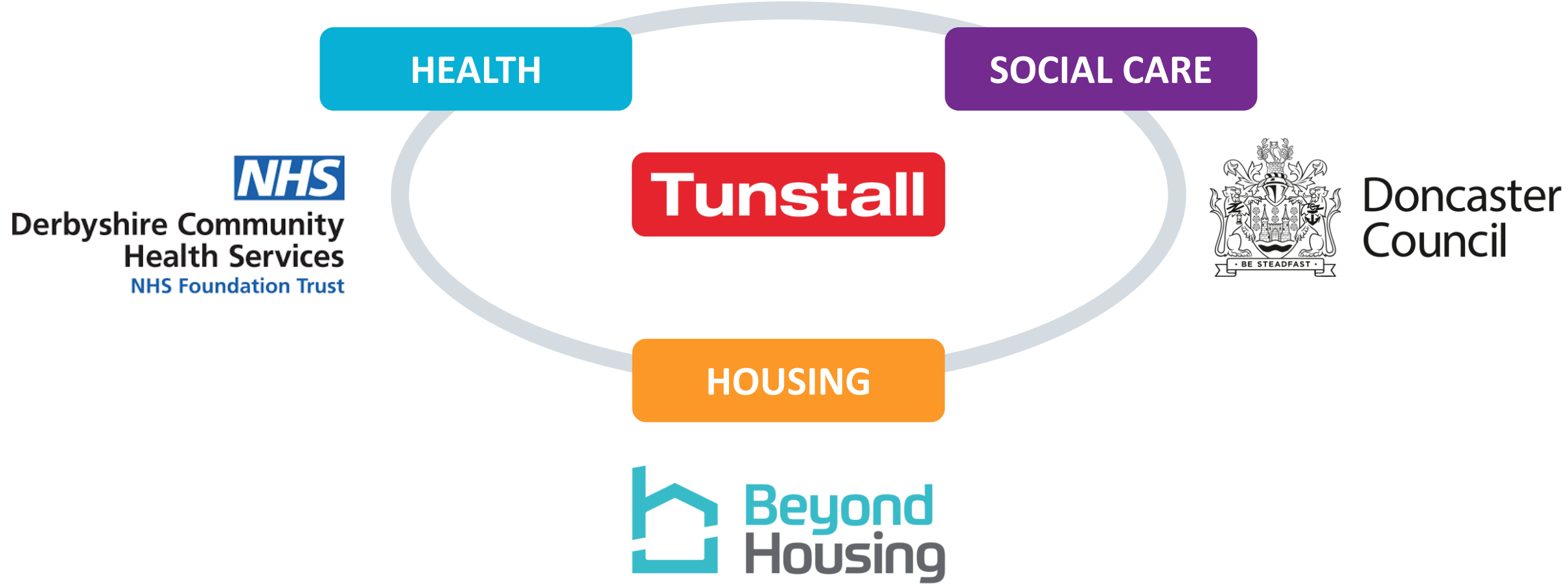
NEED FOR SOCIAL CARE IS RISING:



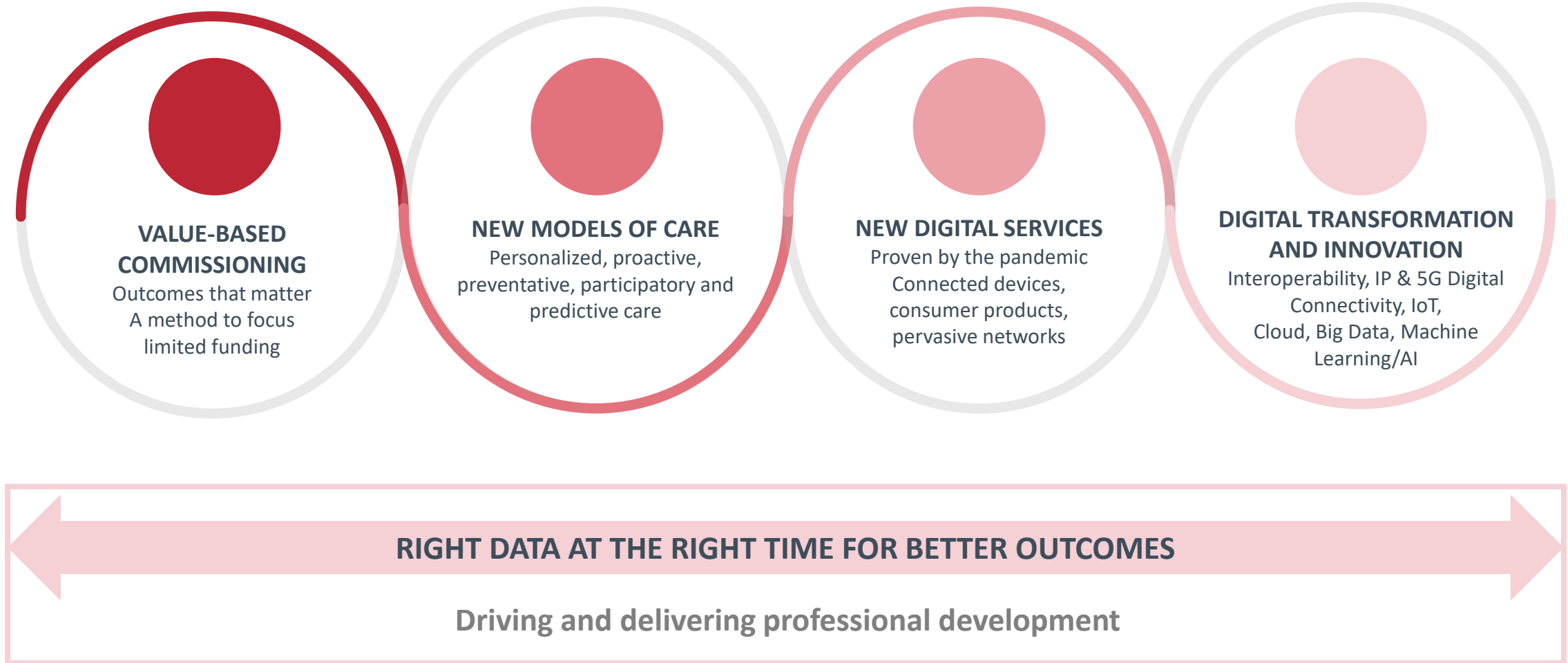
THE BENEFITS OF USING TECHNOLOGY IN SOCIAL CARE:



Partnership working and collaboration



Driving Health and Care Transformation



Digital Inclusion and Transformation



Take a consultative approach – working together to understand your challenges, designing the best digital future-proofed solutions



Whilst there are challenges to overcome, maintaining or adapting your existing solutions where possible is both economical and the right thing to do



Our objective is to work with you to provide digital solutions and a digital implementation plan

Vision for the Future



TECNOLOGY ENABLED CARE



INSIGHT AND COMMUNICATION



ACTIVITY MONITORING



THE FUTURE



Tunstall

Thank you

E: Penny.Ellis@tunstall.com

T: 07720 740571