



TAPPI2: from Principles to Implementation

Nathan Downing
Director of Membership & Consultancy Services
TSA

www.housinglin.org.uk/TAPPI2



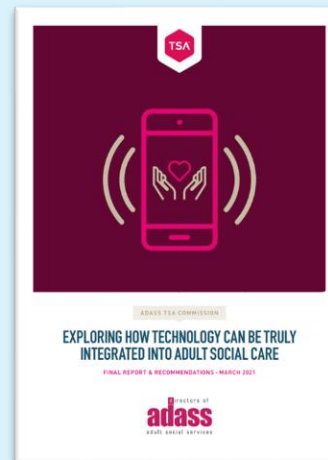
#TAPPI

Unlocking Personalisation: Turning Strategy into Action



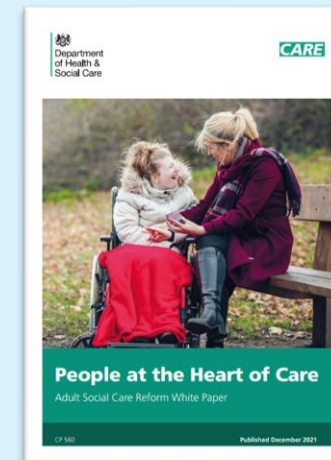
TSA Sector Insight Report

July 2020



ADASS & TSA Commission

March 2021



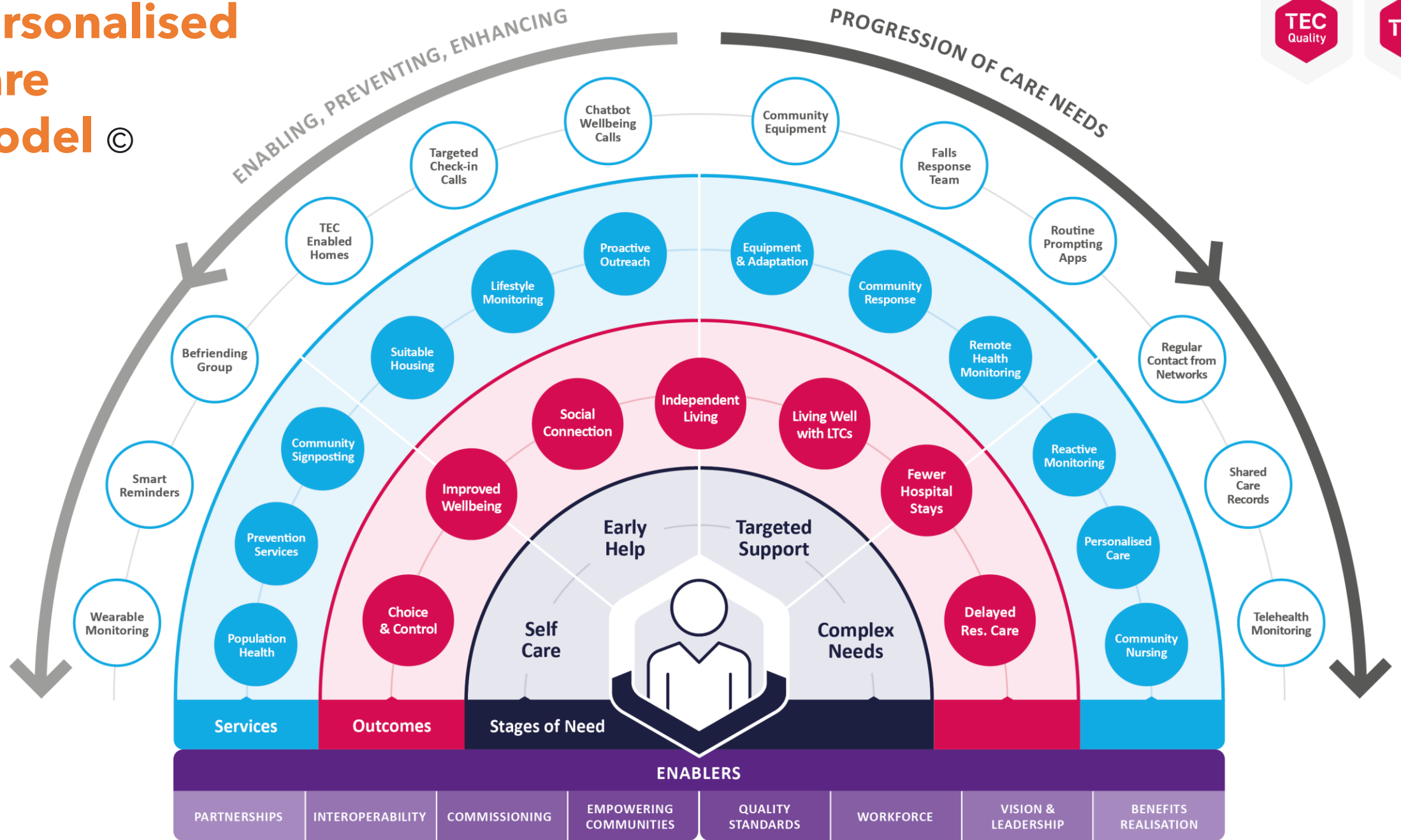
People at the Heart of Care

Dec 2021



“Making every decision about care a decision about housing”.

Personalised Care Model ©





TAPPI2: from Principles to Implementation

OBJECTIVES

- Test 10 TAPPI principles in locality 'testbeds'
- Gather the evidence of what is possible
- Challenge what is perceived to be impossible
- Co-produce a 'TAPPI Framework'



<https://www.housinglin.org.uk/Topics/browse/Design-building/tappi/>



Housing LIN

Connecting people, ideas and resources



The voice of technology
enabled care



Remarkable research
for healthy ageing

THE DUNHILL MEDICAL TRUST

#TAPPI

Personalisation in ACTION



Remarkable research
for healthy ageing
THE DUNHILL MEDICAL TRUST



Co-production

Technology enabled services need to be proactive and co-produced with people, their families and carers.



Workforce, vision and leadership

Digital infrastructure, skills and approaches in social care must improve so individuals and the care workforce can maximise digital opportunities.



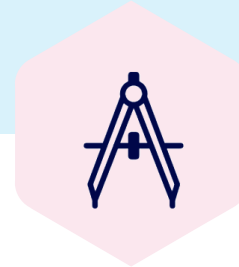
Standards

We should work with technology providers and other adult social care stakeholders to drive the adoption of quality standards.



Evidence evaluation and benefits realisation

Wellbeing and cost benefits continuously collated



Creation of the blueprint

What good looks like

Hands on Support in the community

Delivery of a Personalised Care Innovation Programme

Tappi Framework