



social care  
institute for excellence

# Making every decision about care a decision about housing: Opportunities for technology-enabled care

Kathryn Smith, Chief Executive,  
Social Care Institute for Excellence, who run the  
Commission







Remarkable  
research for  
healthy ageing  
THE DUNHILL MEDICAL TRUST



## **Why focus on housing with care and support?**

- **About SCIE's Commission on the Role of Housing in the Future of Care and Support**
- **What is the case for investing in housing with care and support?**
- **What are the opportunities for technology-enabled care?**

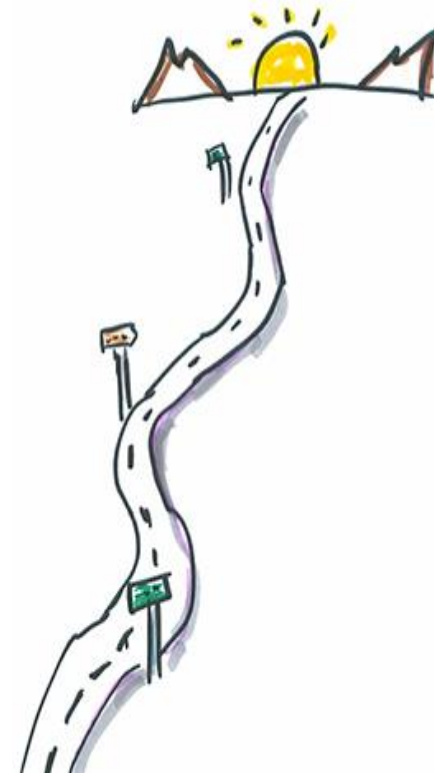


-  Panel of Commissioners
-  Co-production Collective
-  Stakeholder Reference Group
-  Funding - Dunhill Medical Trust

Written by Ewan King, Dr Rebekah Luff,  
Sanah Sheikh and Fiona Templeton

## Aims of the Commission

- **Co-produce with the sector and people with lived experience** and their families/carers, a compelling, evidence-based, long-term vision for housing that facilitates care and support
- **Recommend policy changes** to inform the Government's thinking on the Long-Term Plan for Social Care
- **Develop a roadmap** to support the implementation of the vision for residential care, including viable financial models



## Commission activities

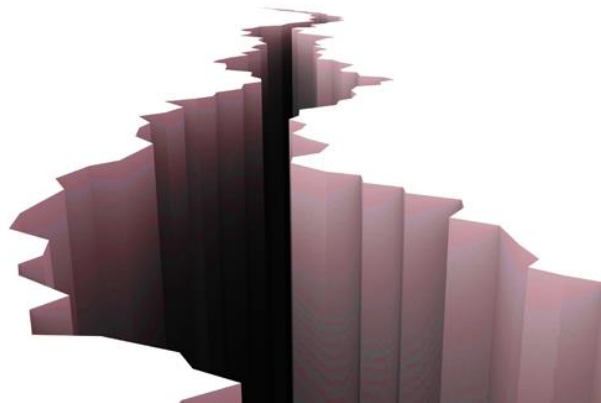
- Population survey – 1543 responses
- Cost benefit analysis for commissioners
- Mapping exercise
- Directory of promising practice
- Case studies
- Appreciative Inquiry
- Review of sector literature
- Discussion paper/webinar Feb 2021



<https://www.scie.org.uk/housing/role-of-housing>

# Establishing the case for change: Without planning and investment...

A widening between  
supply and demand



Needs will go  
unmet



Inequalities will widen







# Instead we need to....

Be more  
ambitious



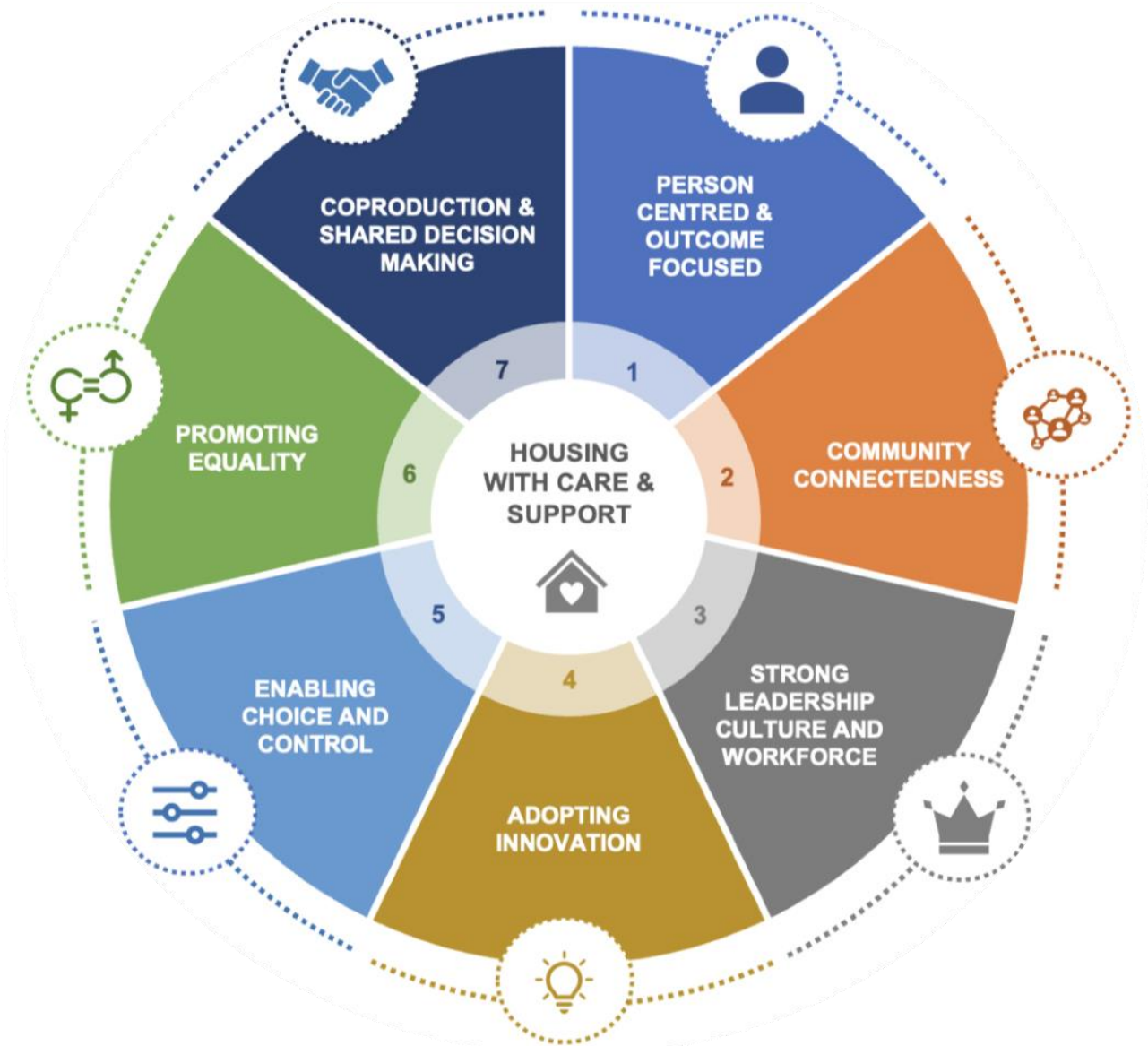
Be strengths-  
based



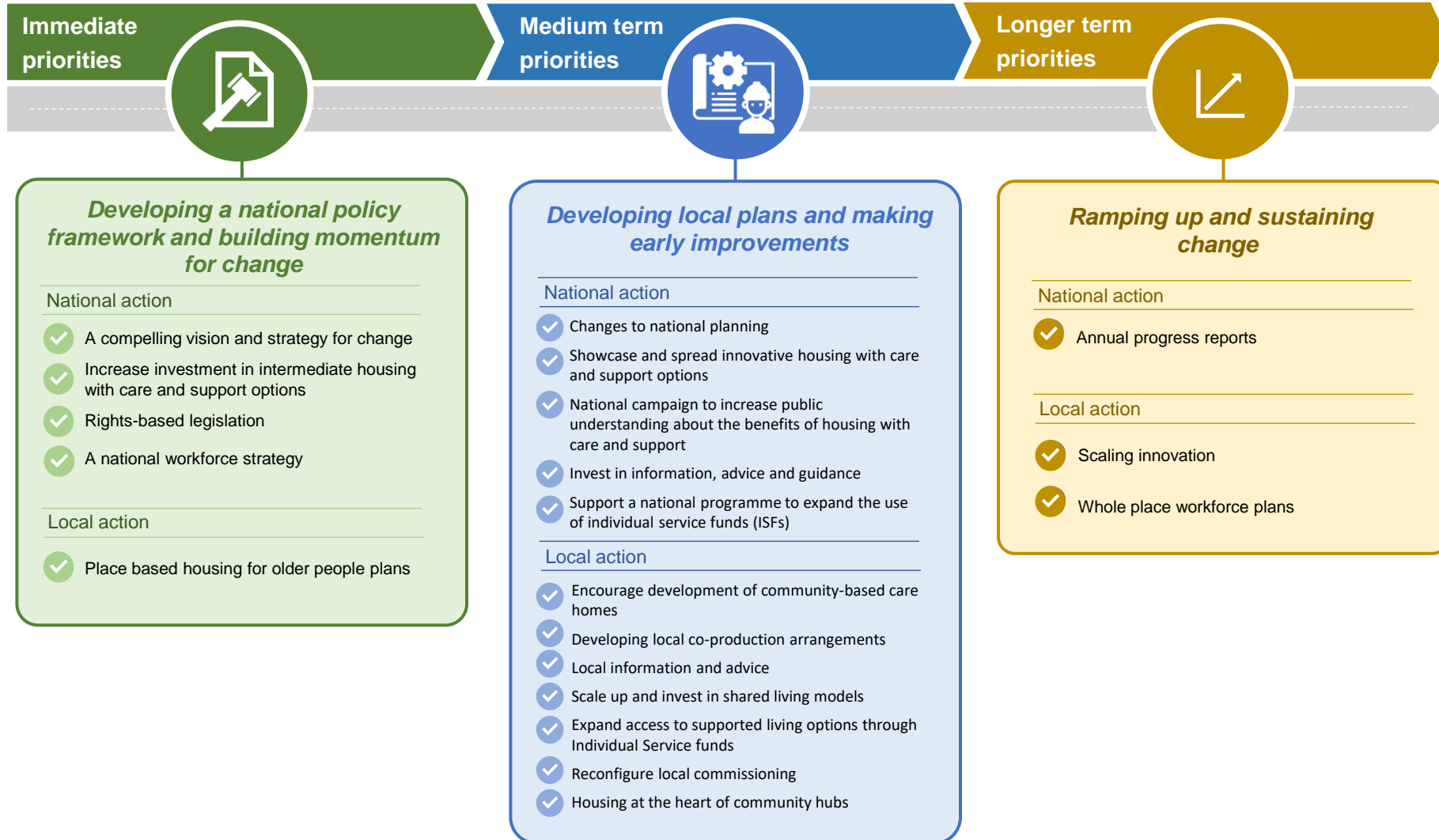




# What the future should look like: 7 Principles of Excellence



# A 10 year roadmap for change



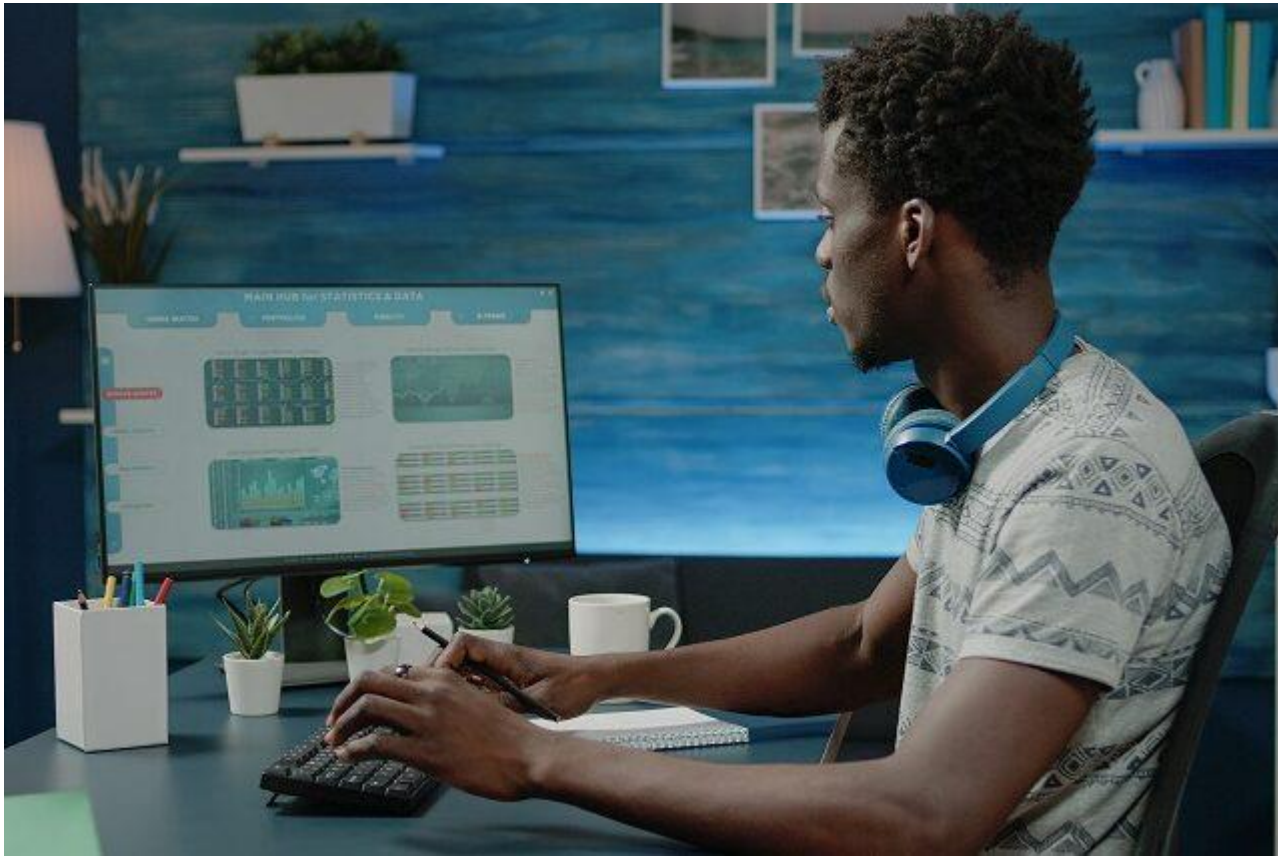


## Local Action

### ***A PLAN IN EACH LOCAL AREA***



*“Local areas should be obliged through new legislation to produce a single place-based plan for housing with care and support for older people which is shaped by the local authority, the NHS, local planning authorities, other local partners, and people who draw on care and support.”*



We concluded that no decision about care and support should be made without considering where people live.

*"Many leaders are now developing fantastic visions of digital enablement. Lack of commitment is no longer a problem. The challenge now lies in implementing these bold plans"*





“ We were pleased to see housing and care prominently featured in the White Paper. We believe that no decision about care and support should be made without considering where people live. Research findings are included in SCIE's recent report, A Place We Can Call Home.

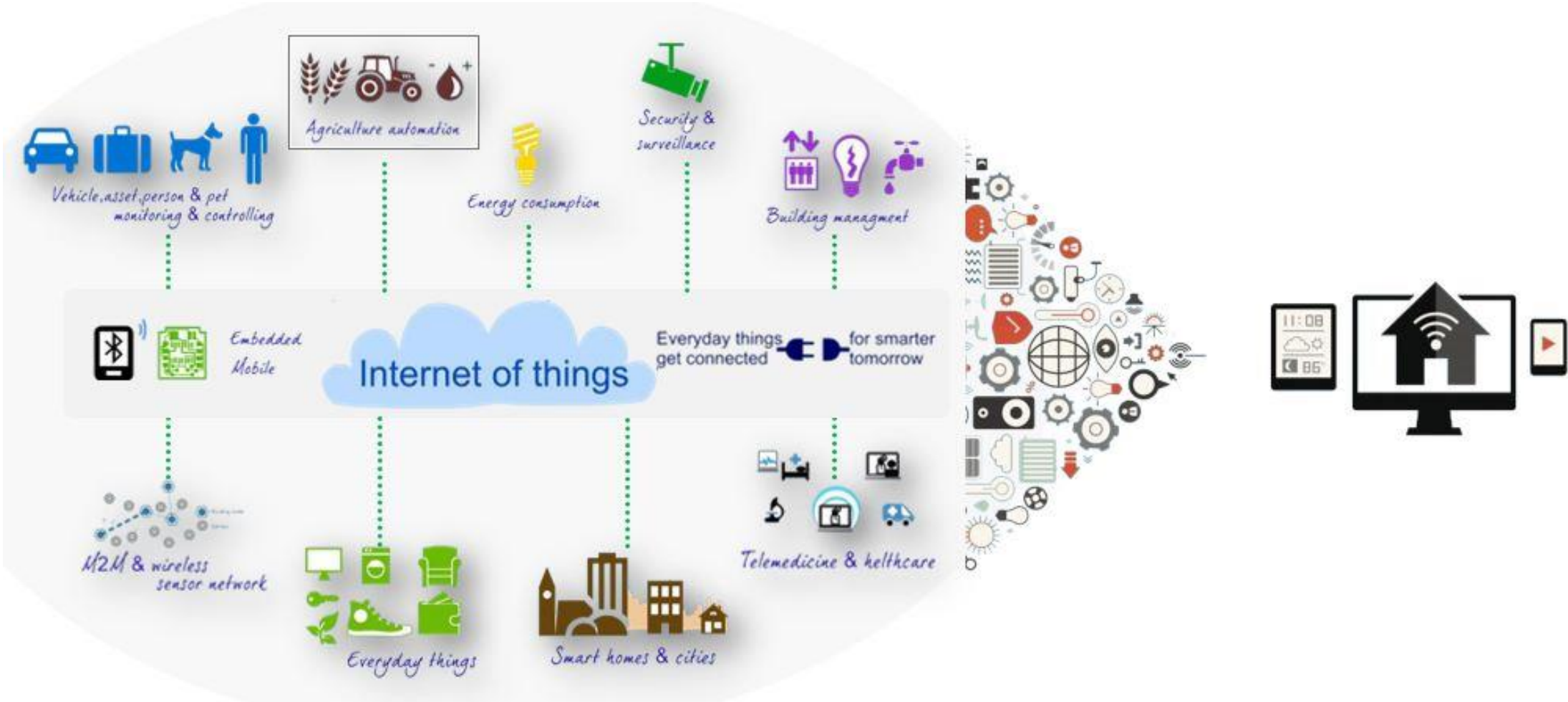
”



“ Local partnerships are key to delivering this ambition, and we welcome the White Paper's continuity for integration reforms already underway. Our research supports the premise of flexibility for local 'place' arrangements. Involving citizens and communities is crucial for determining how best to meet the needs of local people and expand their care choices.

”

# Opportunities for technology-enabled care and support with housing







# Grasping the opportunities

---

- **Be ambitious** -- Start with people's needs in their homes and communities
- **Be strengths-based** -- Apply the 7 principles from the SCIE Commission as a framework
- **Collaborate and co-produce** -- Join with local people, social care partners and housing – e.g., planning, infrastructure, digital security
- **Innovate** -- Test, innovate and scale innovation that supports people to live independent lives at home and in their communities. (Care Tech)
- **Be adaptable** -- Enable personalised and safe care, providing choices
- **Ensure equity** – Accessible, affordable, simple technology