

everon

Your Digital Partner

**All IP Webinar:
Digital Social Care Alarms Update**

9th November 2023

Richard Hosier – Head of Product Development



Hybrid

Digital Dispersed Solution

For individual homes / Stand alone alarm

Digital Grouped Living Solution

For multiple dwellings at a location

Calls: Onsite > staff / Offsite > ARC

Access control

Fire Panels

Origon hub

- Smart wireless hubs
- Up to 64 telecare sensors
- Voice connection
- "I'm OK" functionality
- 3-level resilience (GSM, WiFi, LAN)
- Digital clock and LED reassurance lighting
- Scheme-wide location of individual
- Constant Heartbeat monitoring



Protocols

Unique: everon = digital only.....

Digital

Everon digital protocol

SCAIP/TS50134-9 (likely Dispersed)

NOWIP/BS8521-2 (likely Grouped)

Analogue

BS8521-1 Bridge



ARC Compatibilty

Digitally

Any ARC that is digital

Analogue

All as all talk BS8521-1



Cyber Security

Cyber Security - Digital

Per standard: -

TLS v1.2 (new version soon)

VPN



Connectivity

Resilience

SIM **DUAL**

Plastic + e-SIM

Both: Roaming / Non steered

Separate providers – 2 core infrastructure

WIFI

ETH



Sensors

Full suite: -

Pendant!

Bogus Caller Button

Big Red Button

Fall Detector

Smoke Detector

Heat Detector

Door Alarm

Fire Panel

Radio Token (any TP product)

Etc



Easy.....

Install

Hub – SIM – Plug and play

Sensors – RF – Plug and play

Monitoring

Heartbeats 2m – know if offline

DMP: Dashboard/Monitor status/Receive alerts

Configuration

DMP: Firmware OTA / Change settings OTA

Investigate + Fix 99% remotely



everon

Clients

Clarion: 200+ - Multi Million £ upgrade

Purchasing

Main proc frameworks: ESPO/NHC/PFH...

Lead Times

4-6 weeks



Future Plans

Current Model

Reactive

TEC equipment alerts are after incident

Future Model

Proactive & Preventative

TEC equipment alert BEFORE situation

Is this possible? – Yes!!



Proactive Model

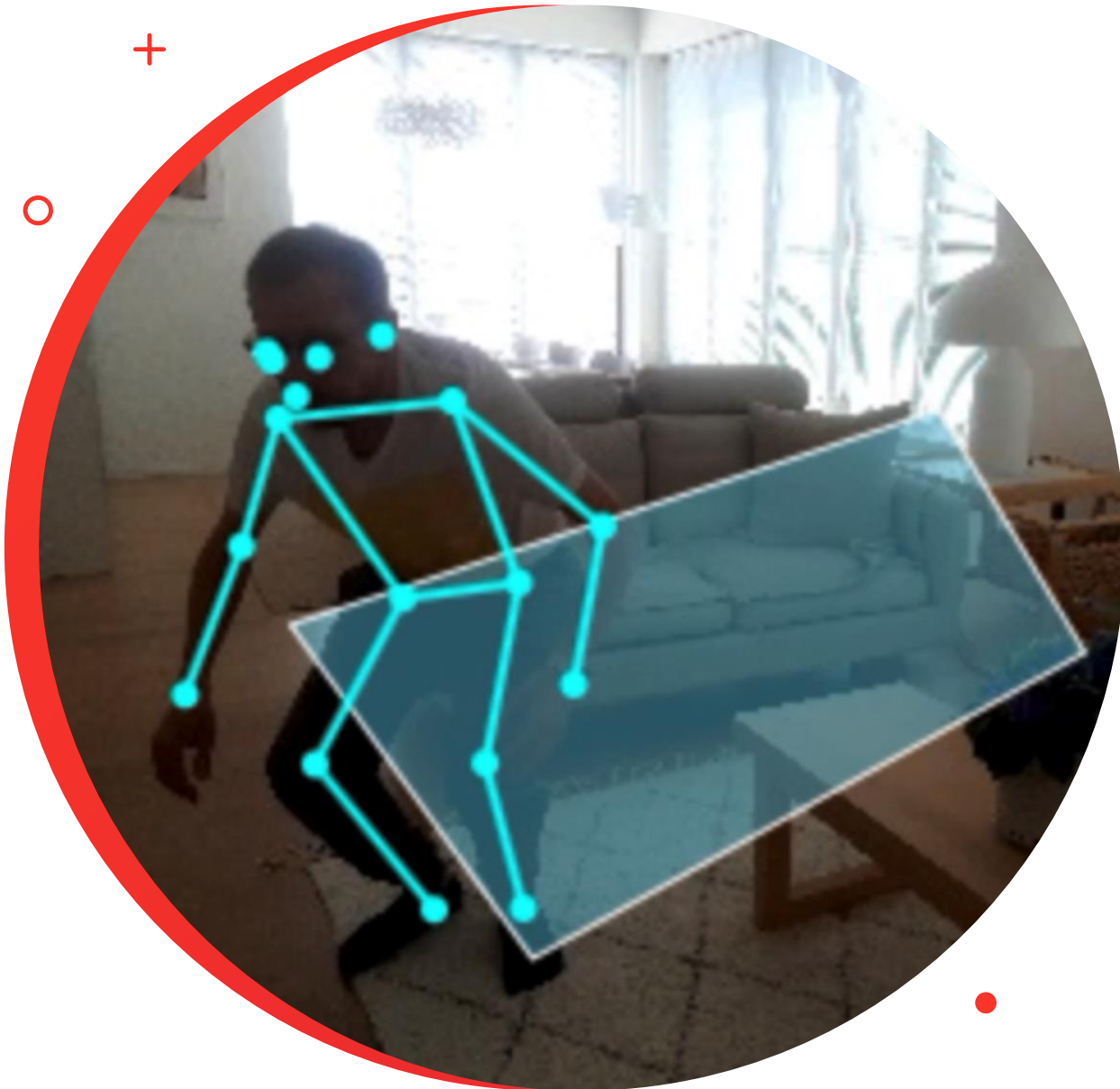
What outcomes we want to solve?

Service Providers tell us they want: -

- Fall – 1/ Accurate status & 2/ Prevent
- Medical issues – 1/ Early indication

Everon solutions.....





OnOn

- Small sensor in person's room
- Not wearable, Discreet, Private
- Set zones: “floor” “bed”
- Monitor/Analyze movement/behavior
- If something happens, raises alert

Benefits

- **Falls**
 - Accurate: If resident falls - status “On the floor”
 - Proactive: “Out of bed” “Walking about” - visit asap
- **Timed bathroom visits**
 - Say 30mins elapsed - raise alarm
- **Safety**
 - “Two people in the room”
- **Bathroom visits**
 - Data = increase in frequency – possible infection
- **Real time monitor, presence, movement**
 - Time in / out of bed, movement, etc



The Future

What does the future look like?

Prevent medical incident? Analyze vital sign data: -

- Body temperature
- Heartbeat
- Pulse rate
- Blood sugar
- Oxygen levels

Where can we go with this?

- Facial recognition: expression/grimaces = pain indication
 - GAIT: walking pattern indicates health/wellbeing
- 

Everon UK Limited

29 Hollingworth Court



Turkey Mill Business Park

Maidstone

ME14 5PP



Mobile: 07717 107744



Email: richard.hosier@everon.net



Website: www.everon.net

Delivering innovative and trusted digital living solutions that enhance life

Our flexible, wireless and open platform, providing personalised and sustainable digital living solutions that enhance life.