



# WHY SIM BASED TELECARE?

Lee Balfour – Sales Director

# The Question.



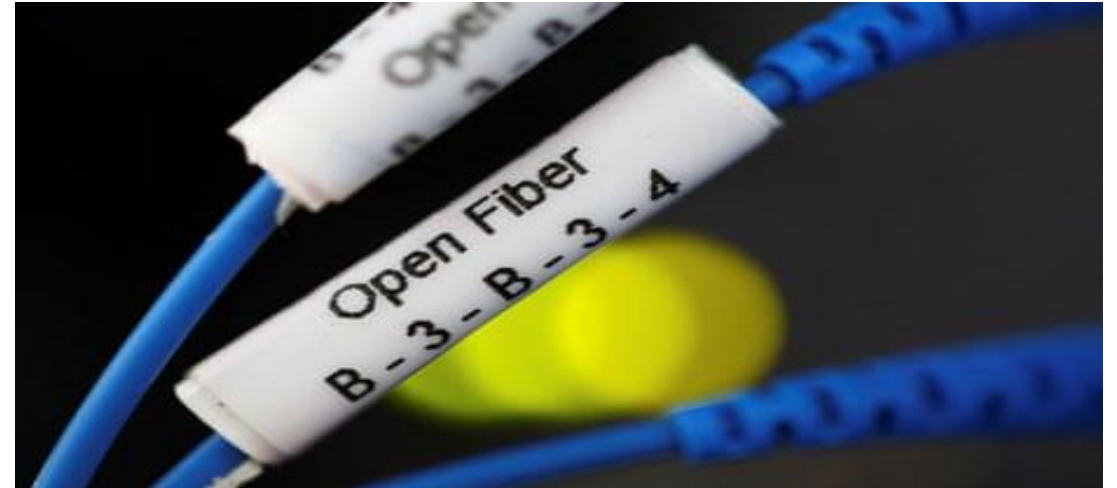
## IS SIM BASED TELECARE SAFE?

99.9%  
AVAILABILITY

TSA QSF  
STANDARD

MAJOR INCIDENTS  
CONCENTRATED

IMPACT IS COMPACT



### Comparison – Broadband.

- Uswitch Survey – 2023.
- 2000 Subscribers.
- 41% Experienced connectivity issues upwards 180 mins.
- A third lost connectivity once a month.
- A quarter lost connectivity for 3 hours or more a week.

# The Current Landscape.



**ANALOGUE  
EQUIPMENT**

**FAILURES ARE  
UNMONITORED**

**DOWNTIME.**

**INDUSTRY  
SUPPLY CHAIN  
CHALLENGES**

**CONFUSION**

**BUDGETS**

# The 'Need' for SIM Based Telecare.



**OVERALL COST**

**RESTRICTION**

**FAILURE**

**INDEPENDENT  
OF BT  
INFRASTRUCTURE**

**SUSTAINABILITY**

**ON SITE  
INFRASTRUCTURE**

# Benefits of SIM Based Telecare.



**FLEXIBLE**

**COST EFFECTIVE**

**MULTI LAYERED  
RESILIENCE**

**SUSTAINABLE**

**GROWING LANDSCAPE**

**FUTURE PROOFED**

# Why Everon.



**SERVICE  
AVAILABILITY.**

**RELIABILITY.**

**DATA  
SECURITY.**



Accredited Contractor  
CHAS.co.uk



Certified Organisation





**Thank you  
Lee Balfour - Sales Director.**

**[lee.balfour@everon.net](mailto:lee.balfour@everon.net)**

**[www.everon.net](http://www.everon.net)**

**Tel: 07931 990352**