

Technology-Enabled Lives: A New Era for Adult Social Care

Nick Goodall

Assistant Programme Director

Digitising Social Care - NHS England

www.digitisingsocialcare.co.uk

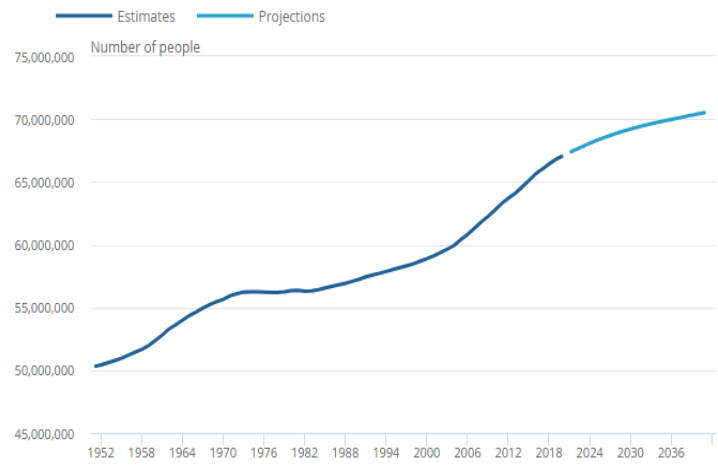


Where are we now?



Figure 1: The UK population has grown year-on-year since 1982

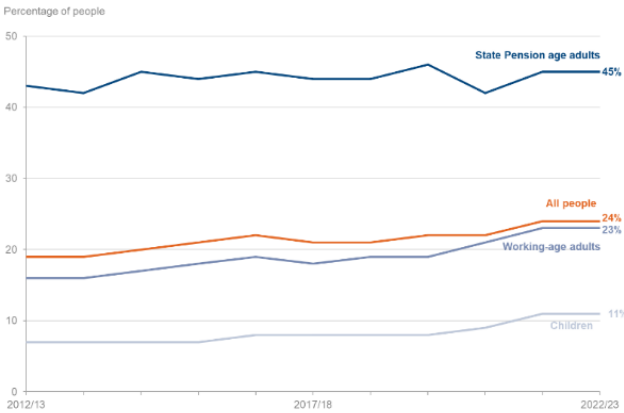
UK population estimates and projections, mid-1951 to mid-2041



ONS – February 2022 [Overview of the UK population - Office for National Statistics](#)

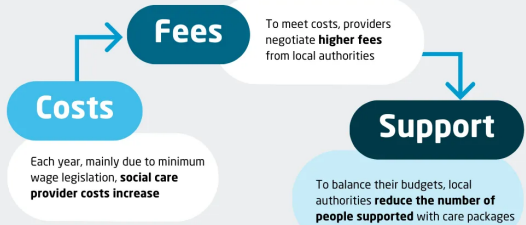
Disability prevalence by age group, FYE 2013 to FYE 2023, United Kingdom

Almost one in four people were classified as disabled.



[Family Resources Survey: financial year 2022 to 2023 - GOV.UK](#)

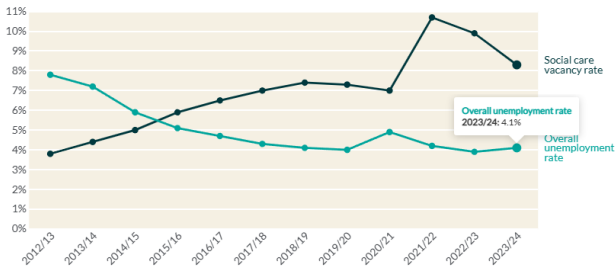
Impact of yearly increase in social care provider costs



[Kings Fund 2025 - Social Care 360 | The King's Fund](#)

The social care vacancy rate in England is falling but remains higher than the overall unemployment rate

Percentage of the population that are unemployed, and percentage of social care posts that are unfilled



Source: Skills for Care 2023/24
Reproduced from Skills for Care analysis. Social care vacancy data are for the independent and local authority sectors only.



Source: Skills for Care 2023/24

Reproduced from Skills for Care analysis. Social care vacancy data are for the independent and local authority sectors only.

Why Technology?

CARE



Public Commitments



We will set new standards for the use of technology in care, so people who draw on care, their families and care providers can confidently buy what works and get the safest, most effective tech into their homes or services, promoting better choice and control for people.

We will join up health and care services by enabling health and care staff to access real time social care, GP and hospital data, including by joining up digital systems with a shared platform. By the end of the parliament, we aim for all care providers to be fully digitised, and for staff to have access to essential medical information.

[New reforms and independent commission to transform social care - GOV.UK](#)



Improving access to care and support



- Helping people navigate social care
- Making it easier to access technology that supports independence
- Providing guidance for using technology inside and outside the home
- Building technology into the process for purchasing care packages



Introducing new standards for care tech



Our principles for this work are:

- Reuse existing standards where possible
- Ensure standards are proportionate – we need to balance the need to ensure quality with enabling innovation
- Make the standards as useful as possible for both the consumer and the supplier
- Ensure the work helps people to make informed buying decisions and supports the scaling up and widespread adoption of care technology
- Align the approach with Health devices, where we can.

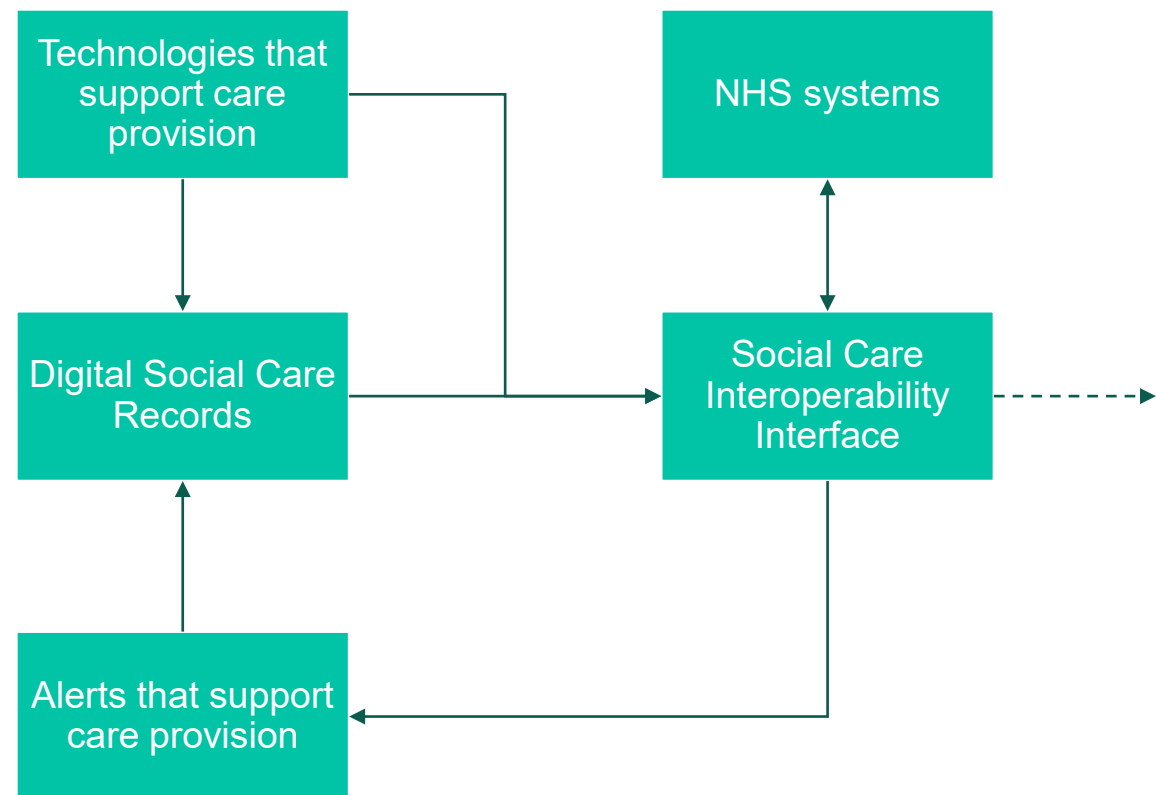
<https://www.find-tender.service.gov.uk/Notice/009260-2025?origin=SearchResults&p=1>

Joining up data

- Targeting support to where it's needed
- Sharing live information to support care delivery
- Removing silos and joining up care around the individual
- Developing datasets to help manage quality and safety and that support innovation and research



Sharing data to support the provision of care



CARE

Find out more by visiting
www.digitisingocialcare.co.uk

Follow us:



Facebook.com/DigitisingSocialCare



Linkedin.com/company/digitising-social-care