



Access Elemental Social Prescribing

Freedom for you to focus on Improving tenant lives and connecting your communities



We created Elemental to.....

**Improve
partnership
working
between
housing and
other
sectors**

**Make a
significant
contribution to
halting avoidable
health
inequalities**

**Develop
tailored
programmes
for the needs
of your
community**

**Co- design
pathways
with
tenants at
the centre**

**Demonstrate
the impact
made on
tenant lives**

A platform that helps you to establish and scale effective social prescribing models

SOCIAL PRESCRIBING



IS NOT JUST . . .

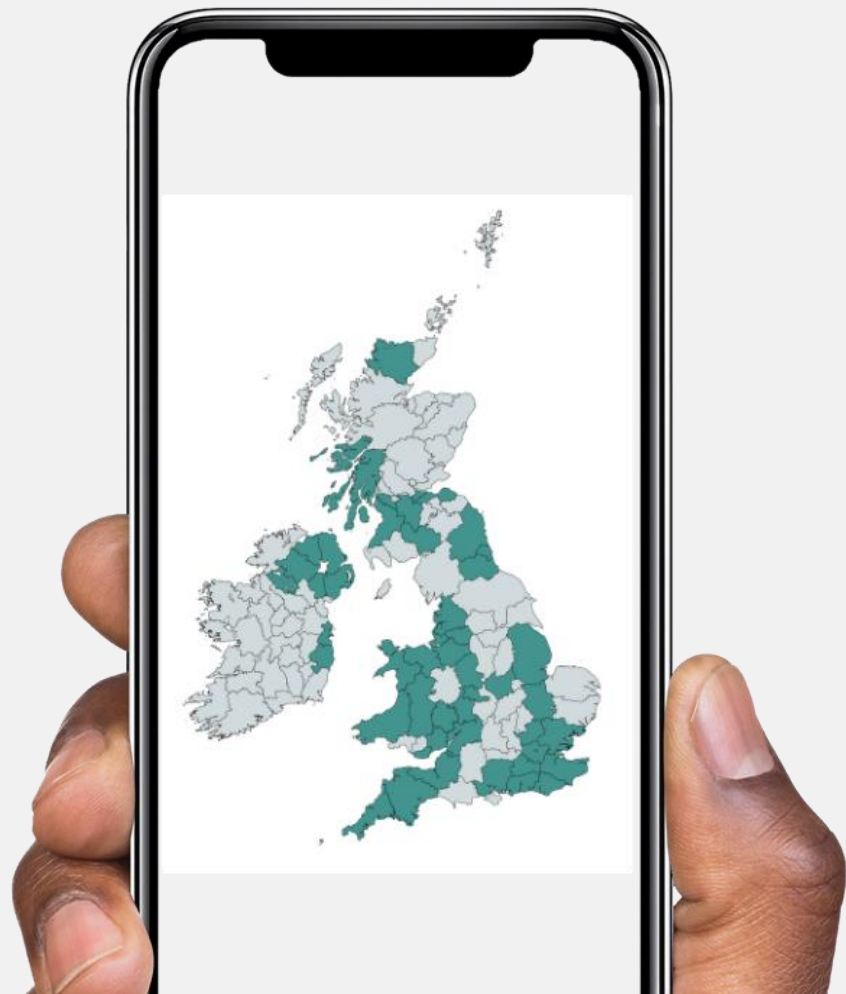
- Signposting
- Health Coaching
- A directory of services
- Activities to fill someone's time now and then

IT'S MUCH MORE . . .



Why choose Access Elemental?

The social prescribing movement continues to grow and evolve with Access Elemental



You've established your social prescribing strategy, so what next?

Embedding digital into your social prescribing/ community wellness programme :

Quick and easy referrals



Empowered team



More than a housing
Association



Track and monitor
impact



Strengthen partner
relationships



Boost engagement



Personalised programmes



Reduce social isolation



Calculate value



Identify risks and
trends



A Client Journey On Elemental

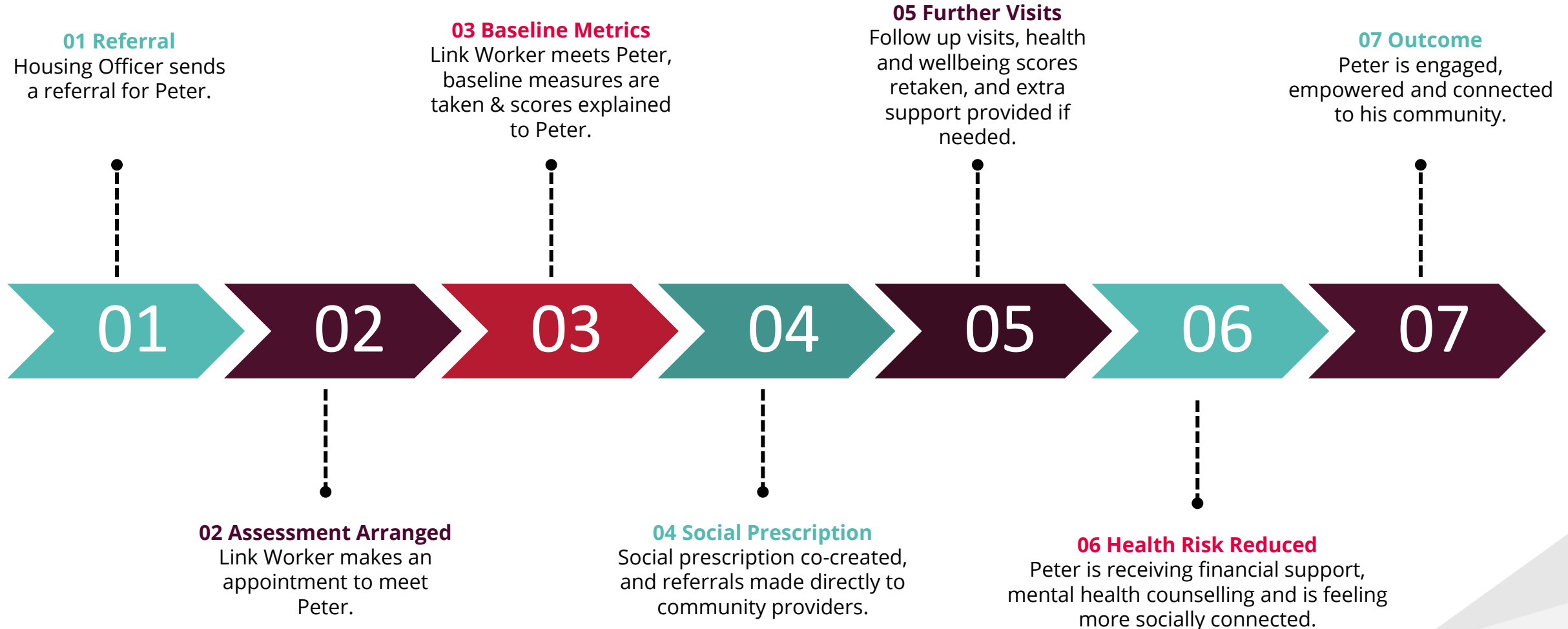


Meet Peter

- **Peter is 23 years old** ●
- **Mild learning difficulties** ●
- **Recently lost his mother** ●
- **Experiencing financial difficulties** ●
- **Experiencing low mood and bereavement** ●



Peter's Journey...

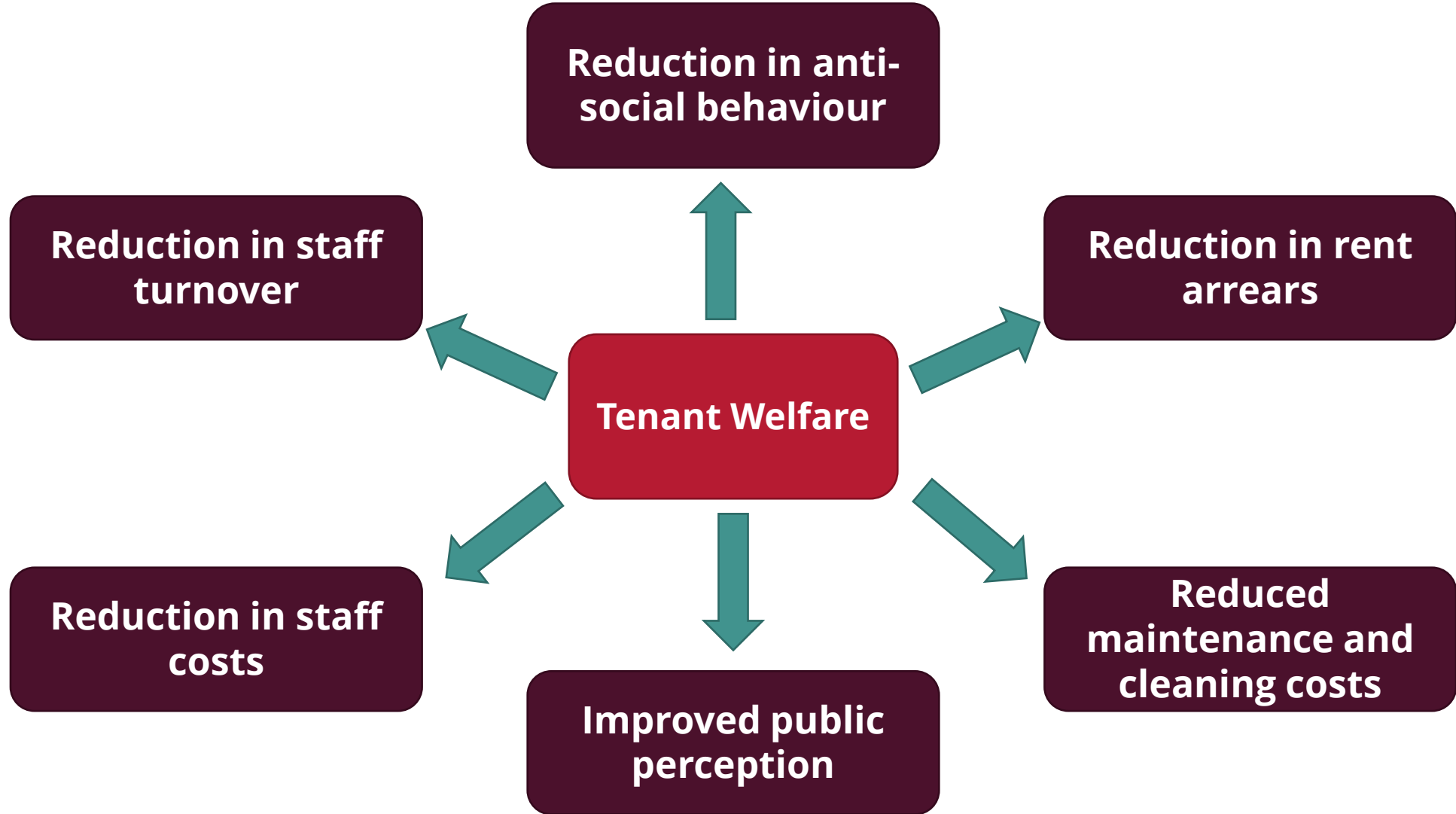


Meet Peter

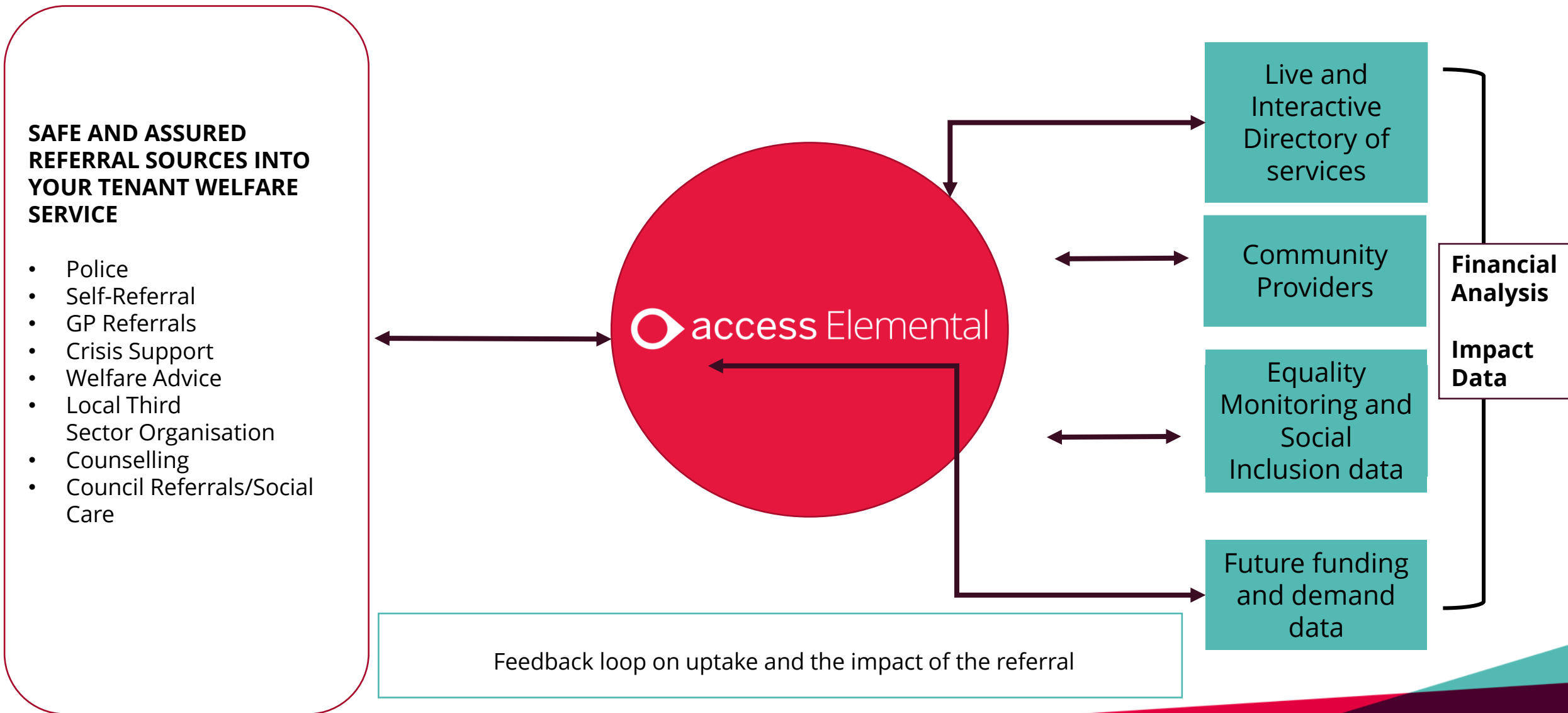
- Discretionary housing payment backdated
- Applied for a new cooker
- Financial support and guidance
- Engaging in digital and social activities
- Mental health support
- Supported in his own community



The Challenges



The Solution



Reporting Capabilities

Capturing and recording the impact of the person, the community and the health and social care sector

Collects demographic information on individuals referred including reasons for referral and source of the referral

Further information can be attributed to the individual using a cohort group such as Carer, Veteran, Smoker, Lone parent etc.

Data around the types of programmes and services individual attends are captured

Pre and post scores taken using chosen monitoring tools measuring mental health and well-being are recorded

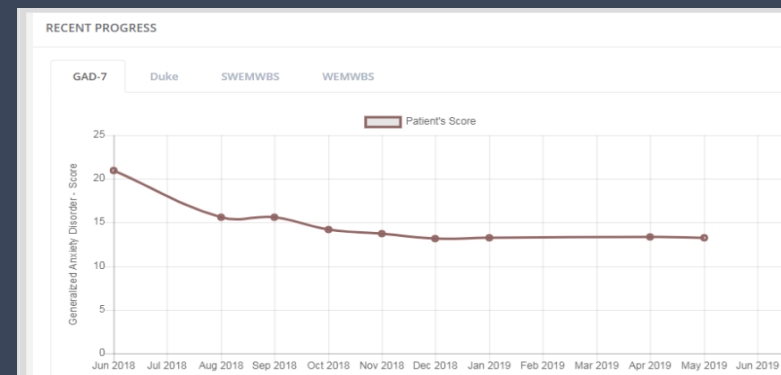
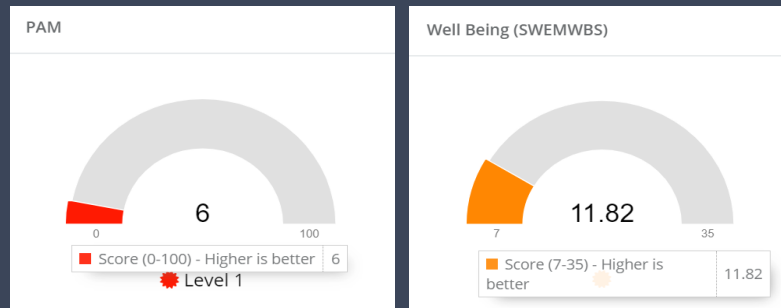


A collection of data from a specific area that can be used for population health management.

Measure the uptake & impact of community Health Wellbeing

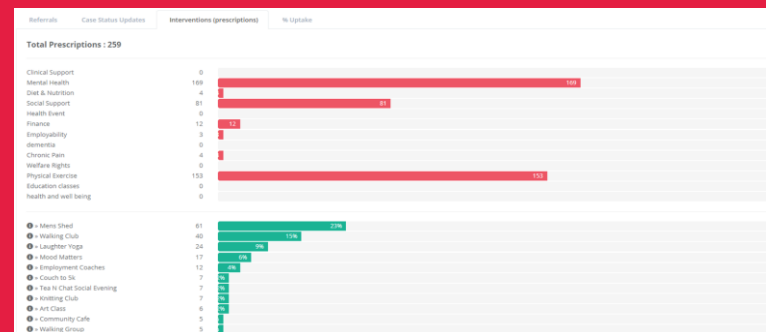
Impact on the Tenant

- Mental Wellbeing (SWEBWEB)
- Depression/ Social Isolation/ physical activity levels



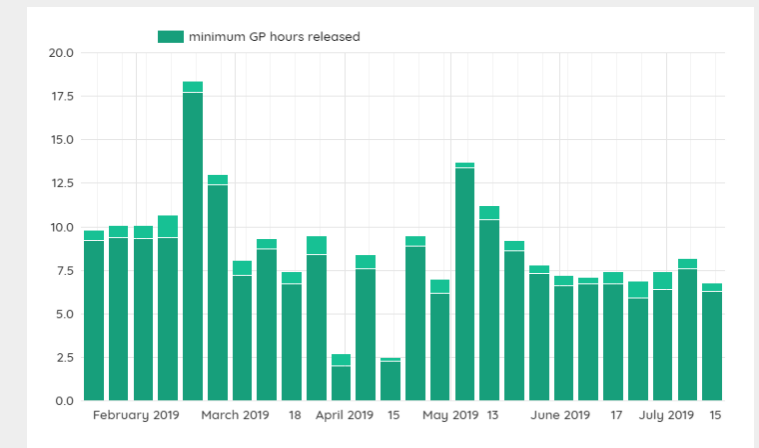
Impact on the community

- Number of referrals received
- Review common reasons for referral
- Capacity to manage referrals
- Where the gaps are



Impact on the Housing Association

- Creating communication process
- Reduce anti social behaviour complaints
- Develop community groups
- Reduced rent arrears



Customer Testimonials

Cameron Watt CEO Alpha Housing

“Bringing a social prescribing model to our local communities , connecting our tenants together getting advice on money and maintaining their home this has been made possible through the Elemental platform. We believe this service will have really impact on the community and the residents of Belfast”

Project Manager: Angela Rouchy Clanmil Housing

“Elemental enables me to produce data, evidence, and impact of how the project is going . Easy access to reporting demonstrating and proving the impact and through Elemental I can do that”

Thank You

Victoria.owens@theaccessgroup.com

www.theaccessgroup.com

07706346313

