



Longer Healthier Lives

Alyson Scurfield
Chief Executive, TSA

29 June 2023



Unlocking Personalisation: Turning Strategy into Action



People at the Heart of Care

Dec 2021



A Healthier Wales: our Plan for Health and Social Care

Oct 2021
(Refreshed Report)



Digital and Health and Care Strategy - Scotland

Oct 2021
(Refreshed Report)



Time To act

April 2023



Going further for winter: Community-based falls response



Use of community-based falls response services presents significant opportunities to:

1) Enhance outcomes and experience for those who fall, through improving initial response times and reducing the risk of long lies.

2) Improve system efficiency, focusing ambulance capacity where it is needed most and building on existing community-based provider models.

Amanda Pritchard

Chief Executive
NHS Foundation England

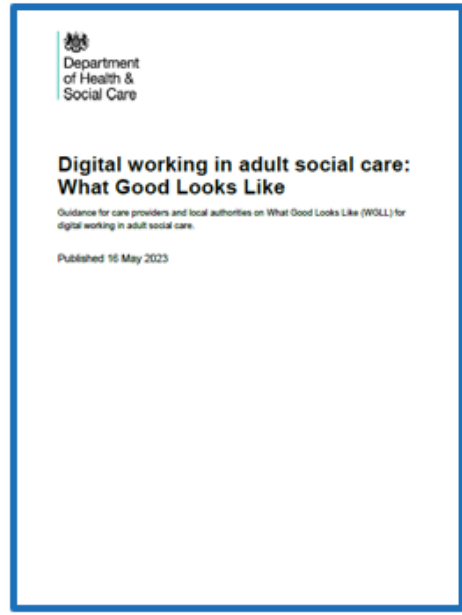


Unlocking Personalisation: Turning Strategy into Action



[Delivery plan for recovering urgent and emergency care services](#)

January 2023

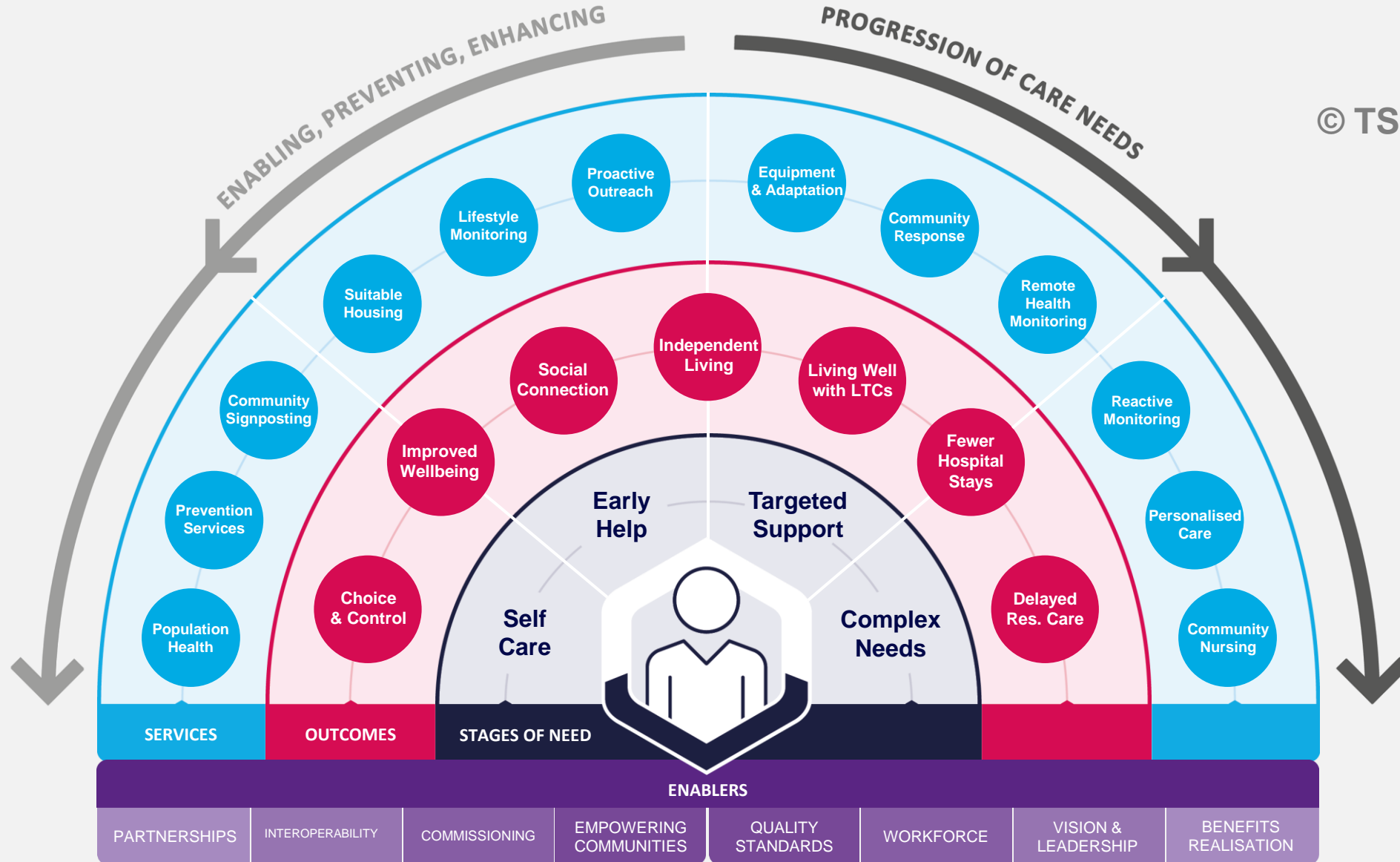


[Digital working in adult social care: What Good Looks Like](#)

May 2023

Slowing down the progression of need

© TSA CIC 2022



With thanks to our TEC Theatre sponsors:

appello



**IoT Solutions
Group**

TSATM

Thank you



TSA TEC THEATRE

The voice of technology
enabled care

Sponsored by



Supported by



Health and Housing: Mainstreaming Community Based Universal Response

Alyson Scurfield, Chief Executive, TSA

Caroline Williams, Director – Adult Integrated Care, Warrington Borough Council and Warrington and Halton NHS Teaching Hospitals

Helen Loveday, Head of Quality and Improvement, TEC Quality

Claire Laing, Service Policy, Design and Implementation Lead - Community Care, Primary, Community and Personalised Care Directorate, NHS England

