

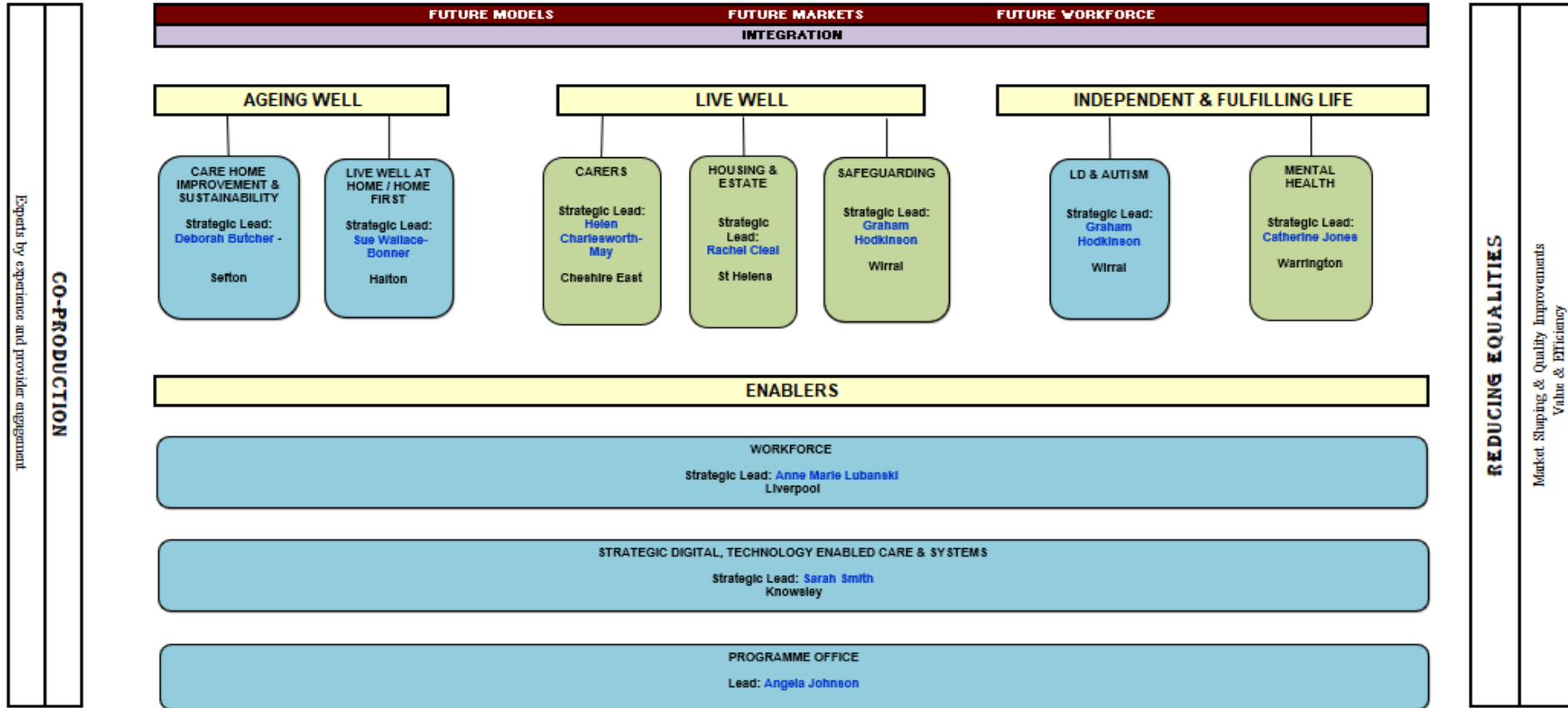
**Cheshire & Merseyside
TECHNOLOGY ENABLED
CARE**

20th September 2022

**Fiona O'Reilly
TEC Lead – Cheshire and
Merseyside**

directors of
adass
adult social services
Cheshire & Merseyside

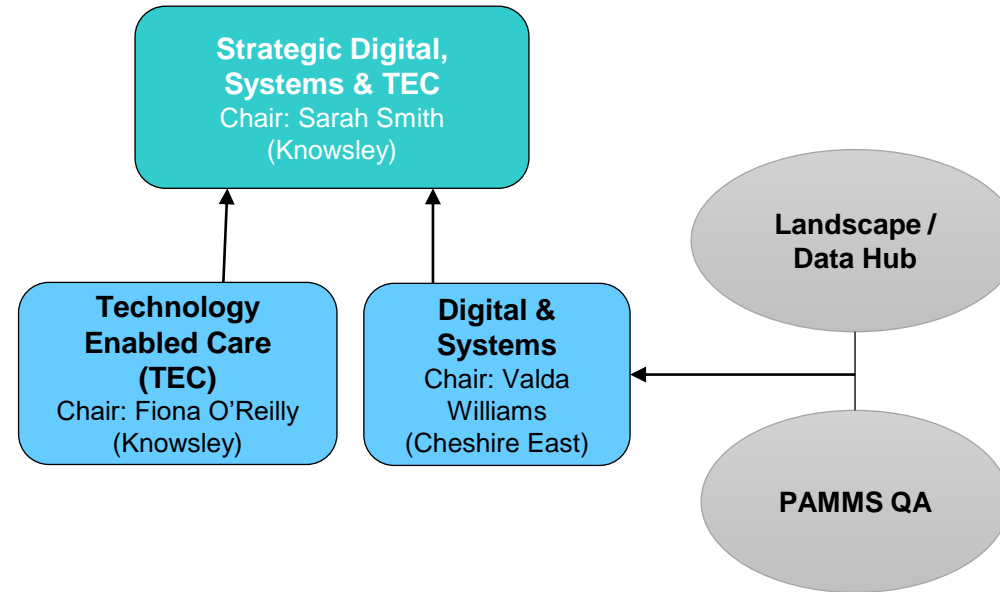
C&M ADASS TRANSFORMATION PROGRAMME



Strategic Lead
Strategic Lead & Programme of work

Current governance for delivery of C&M ASC Digital, Systems and TEC

One of the workstreams for the Cheshire & Merseyside ADASS Transformation Programme is Digital, Systems and Technology Enabled Care (TEC) which consists of the following governance:



Sarah Smith, Executive Director Health & Social Care is the Strategic lead for this workstream and chairs the Board

Some examples of our work in Cheshire and
Merseyside

Digital Social Care Records

C&M region has secured £1.4 million from NHSE in year one of a 3 year programme to implementation of **digital social care records** across Cheshire & Merseyside.

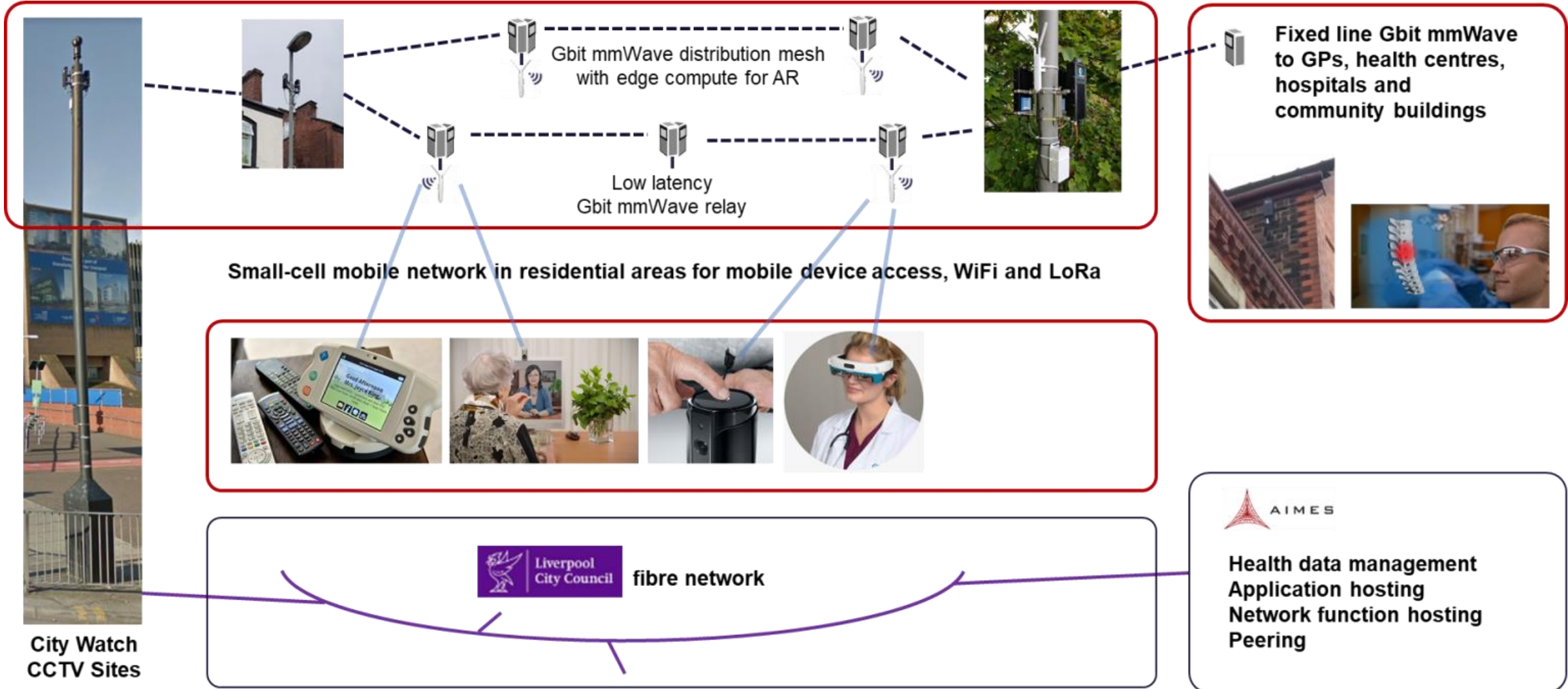
The expected **longer term output** from the 3yr programme will be for social care providers to make the shift to digital social care records, which can involve funding for improved Wi-Fi, devices, implementation and licences for an approved digital system as well as training and support to improve digital skills and confidence.





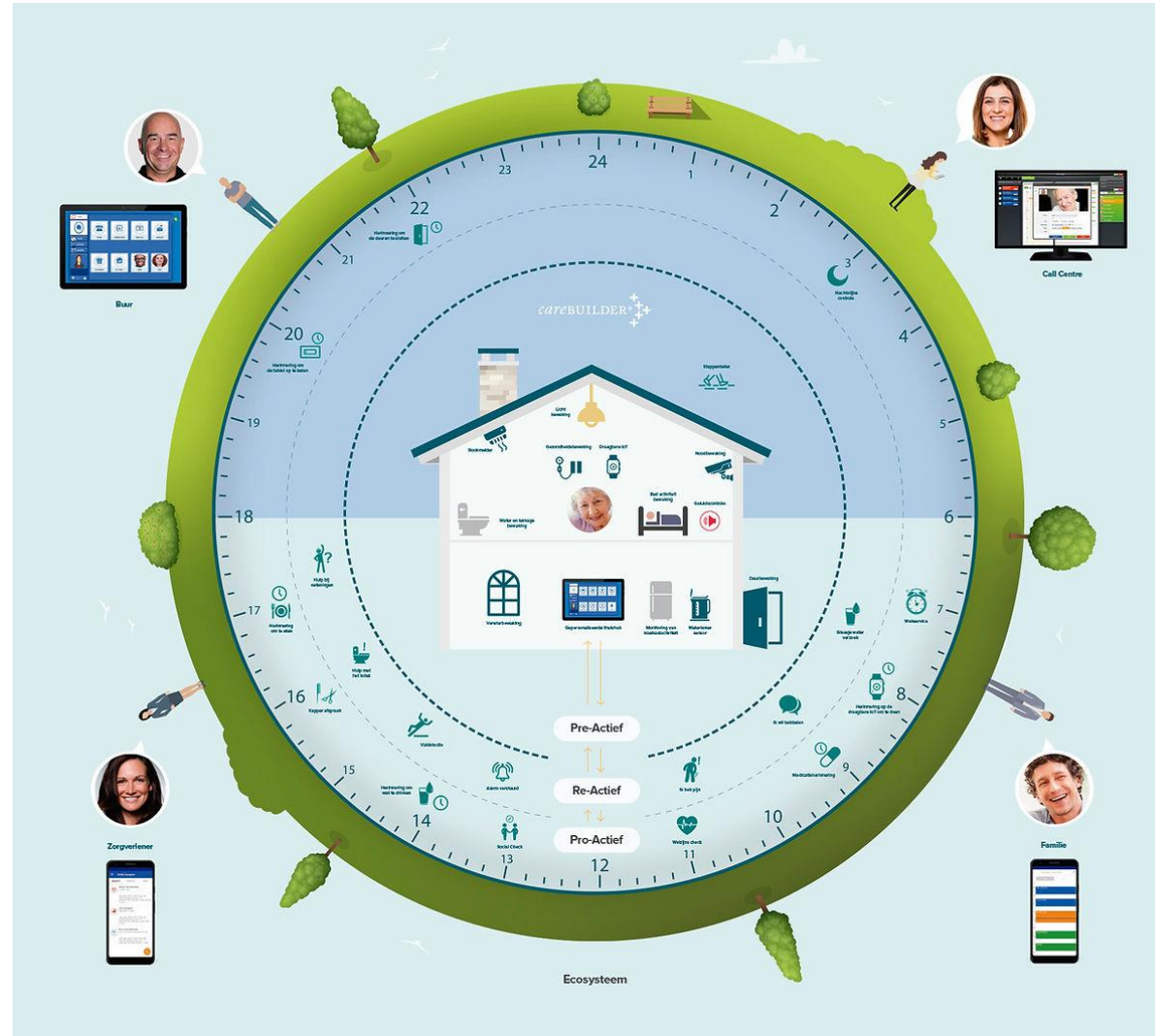
Advancing Digital Connectivity Local Approach: Liverpool 5G Create, Connecting Health and Social Care

How – The Technical Solution



C&M Technology Enabled Care

Sharing best practice: Technology Enabled Care Toolkit



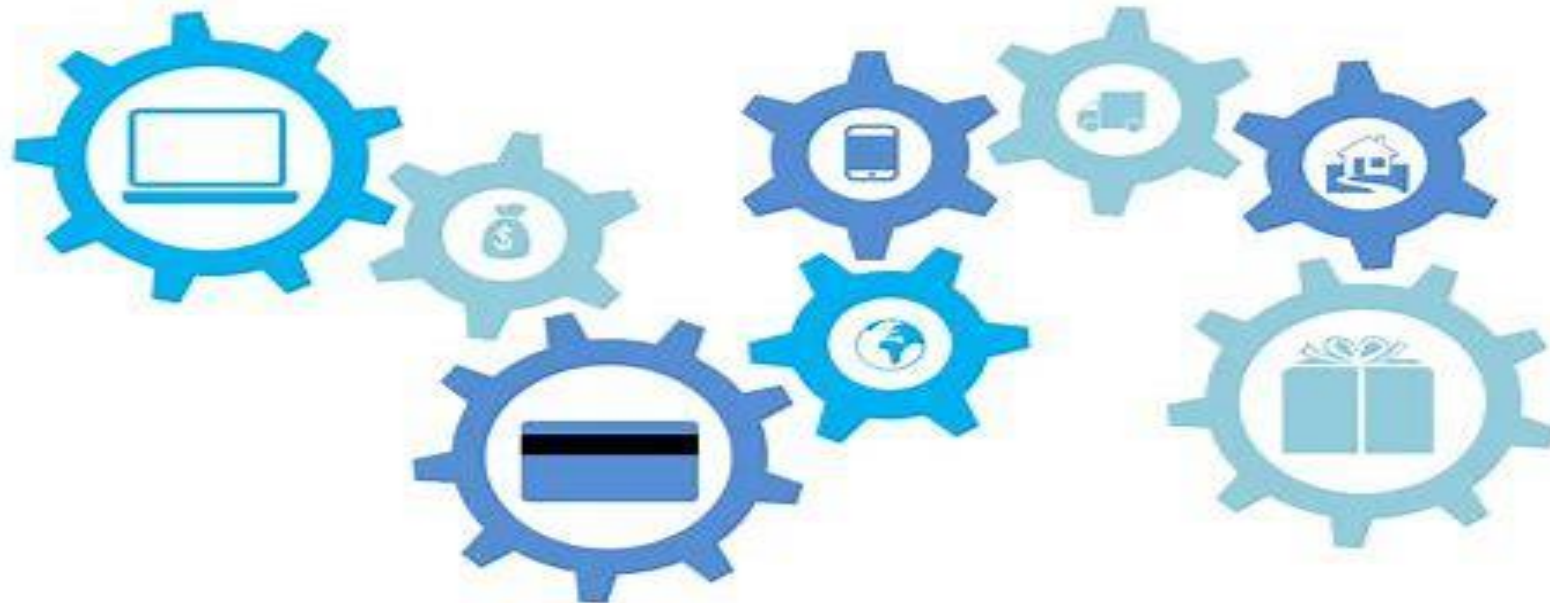
Priority: Embed the principle of Technology Enabled Care first

An **e-learning module** is being developed for front line practitioners across Cheshire & Merseyside. The **expected output** is to enable practitioners to be more confident promoting tech solutions at the point of assessment



Priority: Explore a joint approach to Technology Enabled Care procurement (in 22/23)

Cheshire and Merseyside Dynamic Purchasing System



Contact details:

Service Manger Service Development – Knowsley Council
Cheshire and Merseyside Technology Enabled Care Lead
Fiona.O'Reilly@knowsley.gov.uk