



# TAPPI2: from Principles to Implementation

**Nathan Downing**  
**Director of Membership & Consultancy Services**  
**TSA**

[www.housinglin.org.uk/TAPPI2](http://www.housinglin.org.uk/TAPPI2)



#TAPPI



# TAPPI2: from Principles to Implementation

## OBJECTIVES

- Test 10 TAPPI principles in locality 'testbeds'
- Gather the evidence of what is possible
- Challenge what is perceived to be impossible
- Co-produce a 'TAPPI Framework'



<https://www.housinglin.org.uk/Topics/browse/Design-building/tappi/>



Housing LIN

Connecting people, ideas and resources



The voice of technology  
enabled care

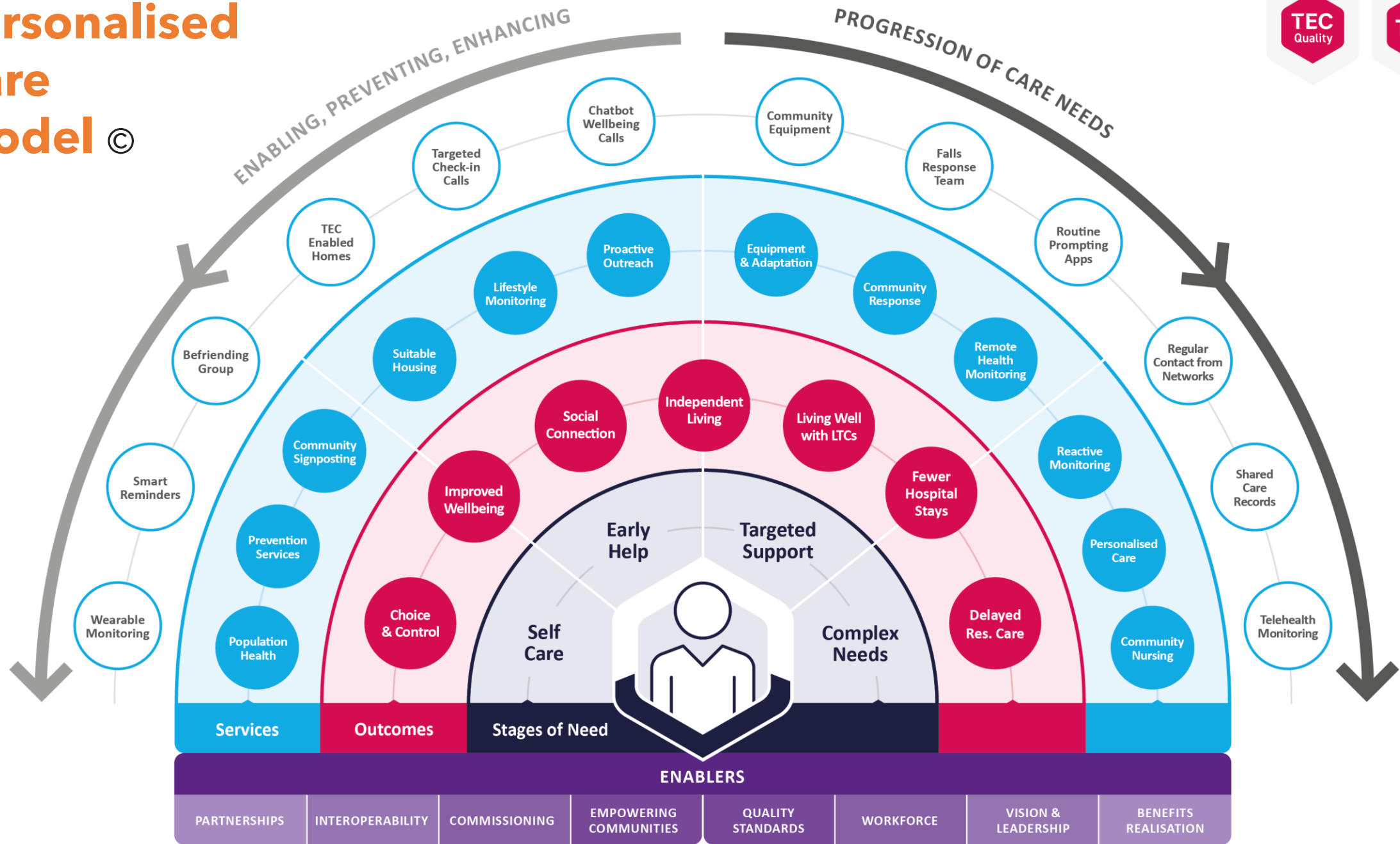


Remarkable research  
for healthy ageing

THE DUNHILL MEDICAL TRUST

#TAPPI

# Personalised Care Model ©



# Personalisation in ACTION



Remarkable research  
for healthy ageing

THE DUNHILL MEDICAL TRUST



## Co-production

Technology enabled services need to be proactive and co-produced with people, their families and carers.



## Workforce, vision and leadership

Digital infrastructure, skills and approaches in social care must improve so individuals and the care workforce can maximise digital opportunities.



## Standards

We should work with technology providers and other adult social care stakeholders to drive the adoption of quality standards.



## Evidence evaluation and benefits realisation

Wellbeing and cost benefits continuously collated



## Creation of the blueprint

What good looks like

Hands on Support in the community

Delivery of a Personalised Care Innovation Programme

Tappi Framework

**CO-PRODUCTION WORKS**

Cambridge Centre  
for Housing &  
Planning Research

# TAPPI2: introducing six demonstrator sites



#TAPPI  
[TAPPI2 Further Info](#)

**TSA**<sup>TM</sup>

**Thank you**